

DTAWeb



DOBLE TEST ASSISTANT® SOFTWARE FOR ONLINE TEST ANALYSIS

DTAWeb is Doble's next generation database software for the analysis of your Doble test results. It saves time and improves efficiency with: advanced editing and merging functions; analysis tools for evaluating and comparing test results against Doble Limit files; and a remote, Doble-hosted database with "one-click" back-up.

The result? You can load, edit, analyze, archive, and export DTAField, SFRA, T-Doble, and Oil data online, securely and efficiently.

TOGETHER WE POWER THE WORLD®



DTAWeb Benefits:

DTAWeb lets you:

- Maintain a cleaner database with advanced editing and merging capabilities
- Identify deteriorating equipment more easily with enhanced analysis tools
- Spend your time more productively – analyzing data, not maintaining a database

DTAWeb Features:

Maintain a cleaner database:

Enhanced editing and database clean-up tools let you:

- Edit nameplate information from within the database
- Perform mass updates on companies, divisions, and locations
- Merge identical apparatus within the database, addressing cases where separate files were made with slightly different serial numbers

Identify deteriorating equipment more easily:

Built-in analysis tools let you:

- Benchmark your test results against all similar equipment in the database
- Graph Query Results and Tabulations
- Compare tabulated values against Doble Limit files
- Investigate sub-systems across specific kinds of apparatus

DTA Web - [DTA Web Query 1]

File Query Results View DTA SFA DLab Icons Database Help

Query Results Tabulation

Tabulation: F1 Measured (C00000000)

Bushing No.	Bushing Type	Insulator	Total	E to D1	D1 to C2	C2 to C3	C3 to E4	E4 to E6	E6 to E6	E6 to E7	E7 to E8	E8 to E9
W	U	C1	128	0	0	1	2	25	15	13	24	22
W	D	C1	478	3	6	13	142	215	25	25	6	2
W	D	C1	5994	58	132	517	4417	8181	2664	1281	491	176
W	D	C2	98	0	0	1	10	37	30	15	1	4
W	D	C2	12247	33	197	626	1877	4544	3381	1173	439	278
W	D+	C1	104	0	28	40	24	0	1	0	0	0
W	D+	C1	4009	5	705	2205	870	134	52	31	22	8
W	D+	C2	34	0	7	18	3	6	0	0	0	0
W	D+	C2	2323	22	461	1551	292	125	29	29	8	7
W	D-C	C1	59	1	9	29	27	11	5	7	0	0
W	D-C	C1	7224	21	1616	4217	1452	267	111	78	32	25
W	D-C	C2	33	0	5	9	2	2	3	6	4	2
W	D-C	C2	3215	29	716	1952	365	138	49	26	23	18
W	D-AL	C1	48	0	0	0	7	31	10	0	0	0
W	D-AL	C1	630	1	6	26	143	297	126	21	7	2
W	D5	C1	127	0	0	3	8	17	44	28	12	10
W	D5	C1	9512	28	25	66	417	1270	2344	2766	1677	630
W	D5	C2	24	0	0	0	0	0	0	4	12	7
W	D5	C2	2840	1	8	29	46	249	437	665	568	373
W	D5F	C1	5	0	0	0	0	7	3	4	1	0
W	D5F	C1	163	1	0	0	12	18	29	24	4	1
W	D5F	C2	12	0	0	0	0	5	4	3	0	0
W	D5F	C2	142	0	0	2	14	55	42	14	4	3
W	D5HER	C1	5	0	0	0	0	1	1	1	0	0
W	D5HER	C1	16	1	7	5	10	21	26	12	10	4
W	D5HER	C2	1	0	0	0	0	2	1	0	0	0
W	D5HER	C2	38	0	2	0	4	11	7	10	7	3
W	S	C1	24	1	2	1	0	1	11	5	0	1
W	S	C1	1644	16	17	28	29	234	1163	1371	638	249
W	S	C2	7	0	0	0	0	0	0	2	0	0
W	S	C2	1149	2	1	3	6	51	64	184	395	279
W	SOLE-PORC	C1	3	0	0	0	0	0	2	1	0	0
W	SOLE-PORC	C1	32	2	0	2	3	4	4	8	5	2
W	T	C1	21	0	3	12	5	1	0	0	0	0
W	T	C1	168	0	11	93	82	10	1	1	0	0

Spend your time more productively:

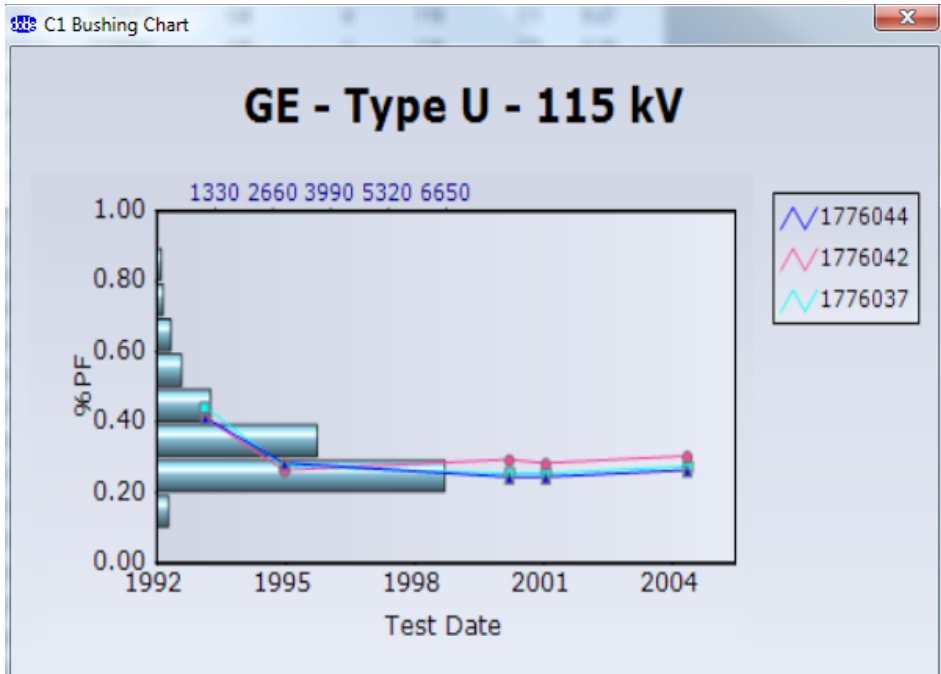
Doble-hosted server/database:

- Eliminates the need for you to maintain a server or manage database installation and upgrades
- Captures your data and backs up files on your network in logical folder structure
- Enables "single-click" export of your entire database to your computer

Manage data more efficiently:

With DTAWeb's new editing tools, analysis capability and data accessibility, you can:

- Localize DTAF support files: manufacturers lists, company/division/location choice lists, temperature correction curves, and Doble Limit files
- Manage data and enforce data security within customized sub-databases
- Streamline loading process and edit rejected files during load
- Attach any type of document to an apparatus in the database, and turn it into your electronic document management center.



DTAWeb Technical Specifications:

- Available to Doble Clients with a current Doble Service Agreement
- Uses the same username and password as the Doble Knowledge Base
- To obtain username and password, e-mail help@doble.com

For more information, contact your Client Service Engineer or email DobleInfo@doble.com

Doble Engineering Company
www.doble.com

TOGETHER WE POWER THE WORLD®



Doble Engineering Company
85 Walnut Street
Watertown, MA 02472 USA
tel +1 617 926 4900
fax +1 617 926 0528

www.doble.com

Doble is certified ISO 9001:2000
Doble is an ESCO Technologies Company

MKT-SL-DTAWeb-02/09