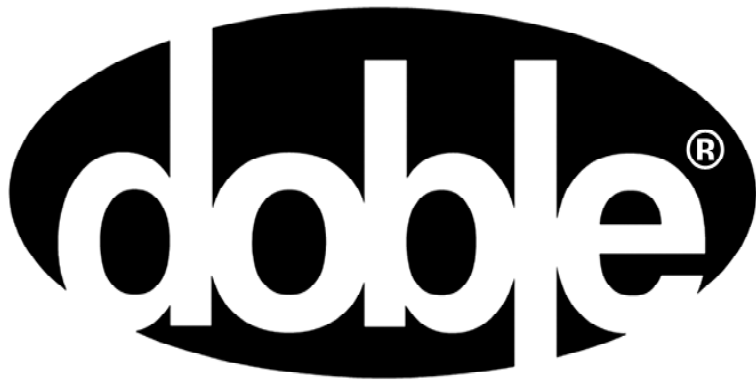


# *M5200/M5300/M5400 SFRA Software Version 5.1*

---

## *Marketing Release Notice*



*Doble Engineering Company*

85 Walnut Street  
Watertown, Massachusetts 02472-4037 (USA)

*Telephone: +1 617.926.4900*

*FAX: +1 617.926.0528*

This notice is solely the property of the Doble Engineering Company (Doble) for the exclusive use of Doble Customers in possession of an M5200, M5300, or M5400 instrument.

In no event does the Doble Engineering Company assume the liability for any technical or editorial errors of commission or omission; nor is Doble liable for direct, indirect, incidental, or consequential damages arising out of or the inability to use this Manual.

Government Restricted Rights Legend: Use, Duplication, or Disclosure by the U.S. Government is subject to restrictions as set forth in subparagraphs (c)(1) and (c) (2) of the Commercial Computer Software – Restricted Rights Clause at FAR 52.227-19.

All rights reserved. No part of this book shall be reproduced, stored in a retrieval system, or transmitted by any means, electronic, mechanical, photocopying, recording, or otherwise without written permission from the Doble Engineering Company.

Doble, the Doble logo, M5200 software, M5200, M5300, and M5400 are trademarks of Doble Engineering Company.

Microsoft, Windows, Windows98, Windows NT, Windows 2000, Windows XP, Windows VISTA are registered trademarks of Microsoft Corporation in the United States and/or other countries.

Copyright © 2008

By Doble Engineering Company

All Rights Reserved



## ***M5200/M5300/M5400 SFRA Software Version 5.1***

This latest version of SFRA software is now available for download from the web at [www.doble.com](http://www.doble.com) and linked through 'Software Downloads'. The M5200/M5300/M5400 SFRA Software Version 5.1 is for use with an M5200, M5300, and M5400 SFRA Test Instruments or as an SFRA Data Viewer.

The M5400 is new, and is the latest addition to the Doble SFRA Instrument line.

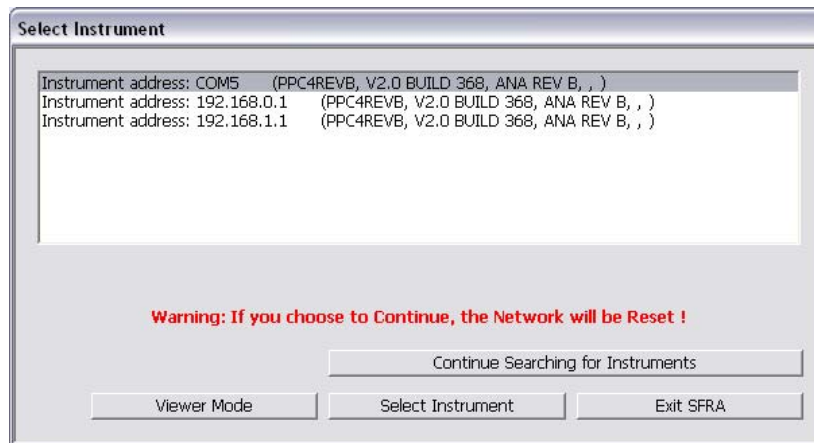
The M5200/M5300/M5400 SFRA Software Version 5.1 provides new features and general maintenance updates.

The following new features were added:

### ***What are the new features and enhancements of Version 5.1?***

#### **USB/Serial Communication Support**

A new option for USB/Serial communication has been added. The USB/Serial communication option is available on M5400 instrument. Older M5200 instruments can be upgraded to accommodate the USB/Serial communication option. Using the USB/Serial communication feature assists users in overcoming Windows security issues associated with using the Ethernet port as the primary communication method.



**Figure 1** – Communication Interface

The communication interface, as shown in Figure 1, illustrates how a USB/Serial connection is discovered and verified. The Connection Type -> Serial Port or Ethernet IP address will be matched the available communication device used by the PC.

## Firmware Flash Loader Utility

The M5200/M5300/M5400 SFRA Software Version 5.1 requires the M5200/M5300/M5400 instrument to run Firmware Version Build 368. The firmware flash loader utility accompanies the M5200/M5300/M5400 SFRA Software Version 5.1 and must be loaded as a separate application. The firmware flash loader utility can be installed by selecting Setup.exe in the \Flashloader directory.

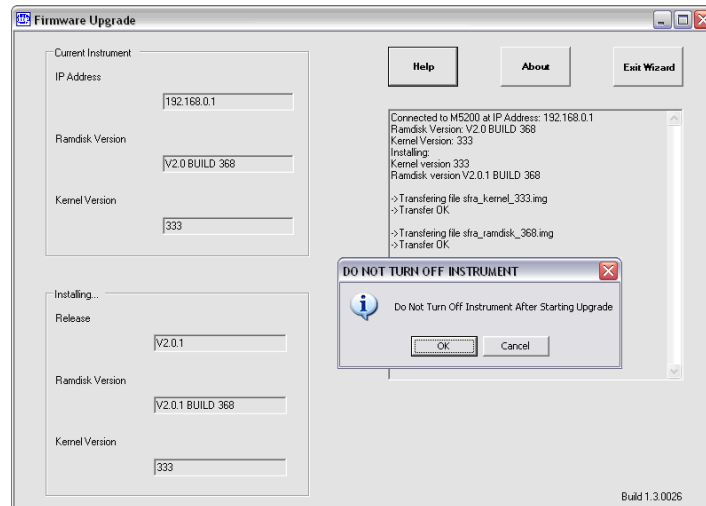
To install the flash loader utility, please follow the instructions below:

1. Go to Flashloader folder and double-click on Setup.exe file
2. Follow the instructions that will follow.

Loading Firmware Version 2.0.1 Build 368 with the firmware flash loader utility is a 4 step process.

1. Find and Connect to M5200
2. Select Product Family
3. Choose Version to Install
4. Transfer/Upgrade Files to M5200

The firmware flash loader utility interface is shown in Figure 2.



**Figure 2 – Firmware Installation Wizard**

To upgrade the firmware, please follow the instructions below:

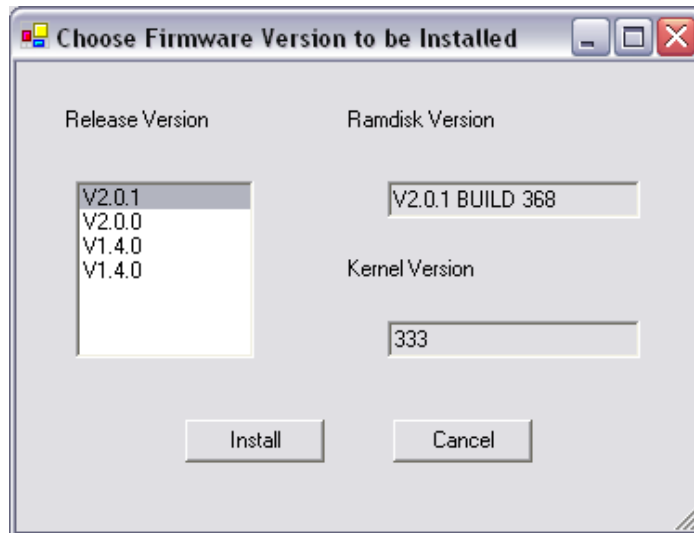
1. Launch the "Flash Loader for M5X00 and TDR900 Instruments" application.
2. Select the appropriate language.
3. Click on "Start" button.
4. Select Product Family, "SFRA Instrument," as shown in Figure 3.



**Figure 3 – Select Instrument Type**

5. The application will search for the available M5200/M5300 instrument, Select instrument when found.
6. Choose the version to install as shown in Figure 4.

Release #: V2.0.1  
Ramdisk Version: BUILD 368  
Kernel Version: 333



**Figure 4 – Choose Firmware Version**

7. Select the firmware from the list, then click on "Install". Once the installation and upgrade is being preformed; **DO NOT TURN OFF THE INSTRUMENT**. The firmware flash loader utility will signal completion.
8. When the upgrade is completed, close the "Flash Loader for M5x00 and TDR900 Instruments" application, then power cycle the instrument.
9. To verify the upgrade has been successful, launch the SFRA software and go to Help About.



## Report Generation

The M5200/M5300/M5400 SFRA Software Version 5.1 increases the output of the report generator. Five views are provided in the new view. The views are as follows:

1. Magnitude
2. Phase
3. Impedance/Admittance
4. Sub-Band
5. Analysis – Difference and Correlation

Figure 5 illustrates a typical view provided by the report generator. These views can be previewed and printed.

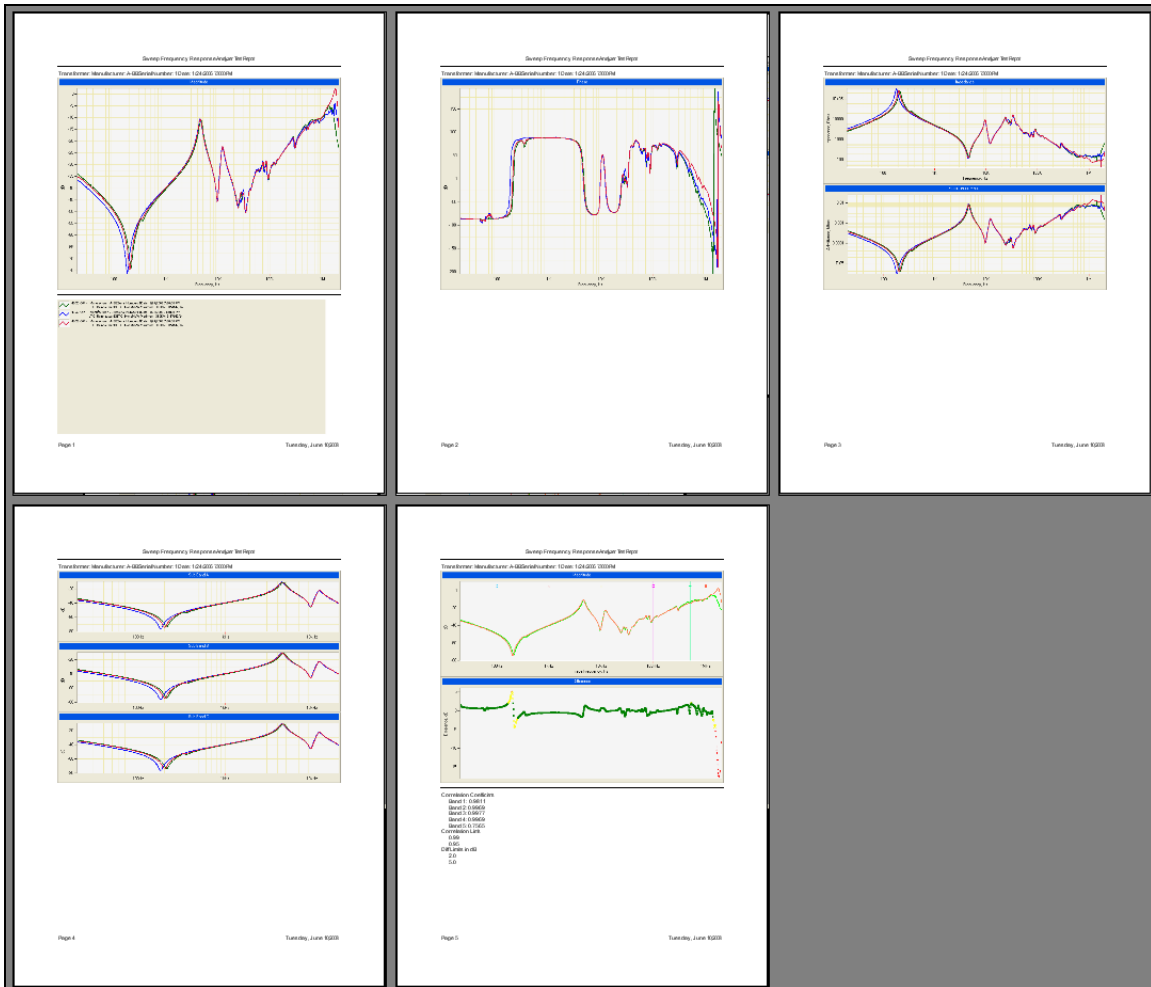


Figure 5 - Report Generator Output

## **User Manual Integration**

The SFRA User Manual has been integrated into the help menu. The manual can be conveniently accessed and viewed at any point during a session.

## ***General Comments***

---

### **Backward Compatibility**

Version 5.1 of the M5200/M5300/M5400 software is backward compatible in that results taken using any previous M5200, M5300, or M5100 software version will be accessible from this version. However, results taken using, M5200/M5300 software cannot be read directly by previous versions of the M5100 software. There is an export facility to allow data to be saved in \*.csv format for use in spreadsheets or the M5100 software viewer.

Version 5.1 requires the installation of Microsoft's DotNet framework before running; DotNet is supplied with the M5200/M5300/M5400 software.

### **Application Notes**

Version 5.1 of the M5200/M5300/M5400 software can be loaded on to an M5100 and then used to control an M5200 or M5400 or act as a data viewer.

M5100 software V1.X or V2.X may be already installed on the PC which is to be used for the M5200/M5300/M5400 software without conflict; neither needs to be removed.

## ***Contact Us***

---

Should you have any questions regarding this software release or any other Doble Engineering Company product please contact us at:

Ph: US +1 617 926 4900

Fax: US +1 617 926 0528

Email: [sfra.info@doble.com](mailto:sfra.info@doble.com)

