



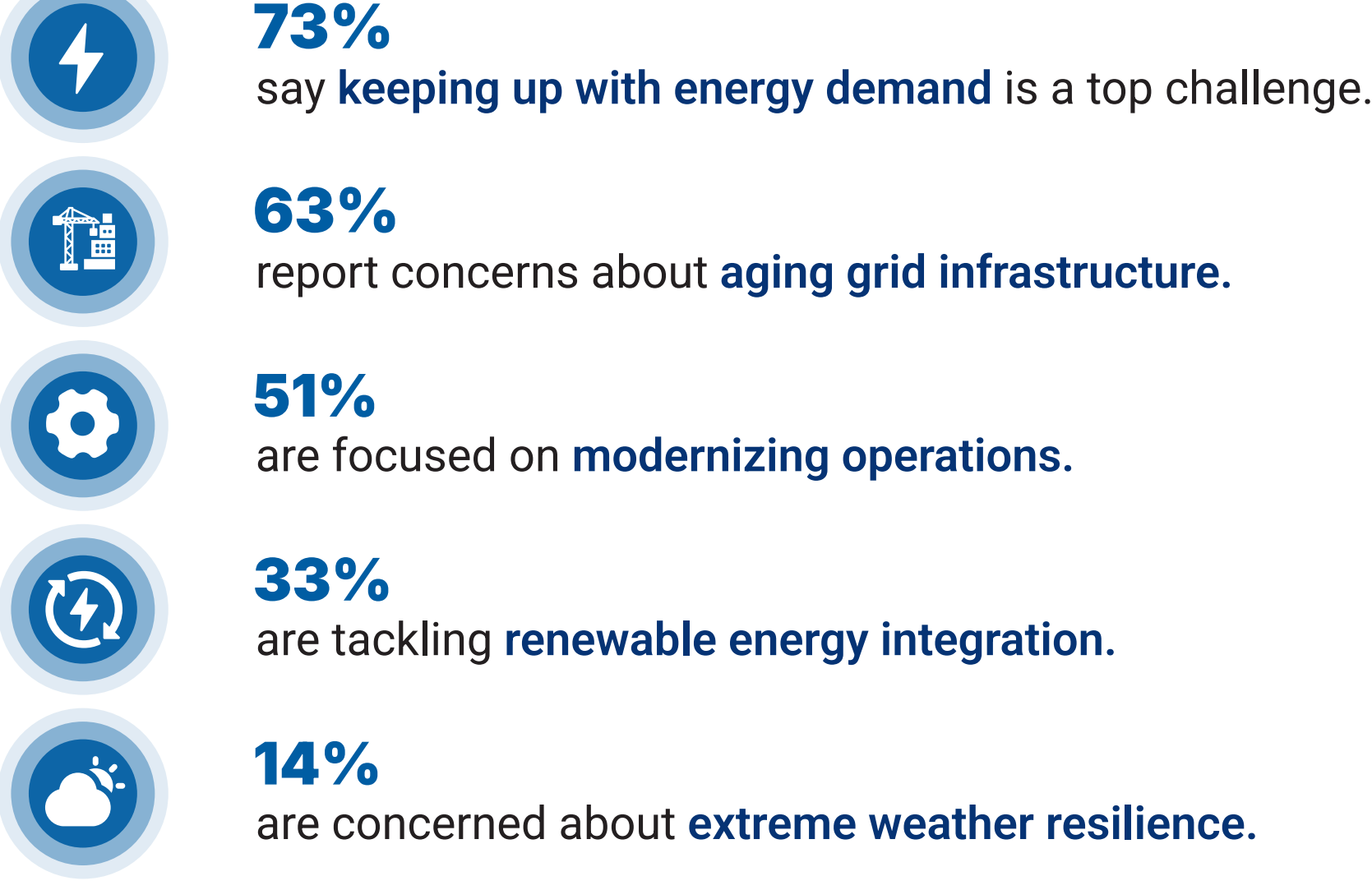
## NAVIGATING ENERGY DEMANDS: WORKFORCE, TECHNOLOGY, AND AI SOLUTIONS

The power industry is under pressure—rising energy demands, workforce shortages, and rapid technological advancements are reshaping the field. To understand these challenges, Doble Engineering surveyed power and utility professionals, including engineers, technicians, and industry leaders. Here's what they revealed about today's top challenges and future priorities.

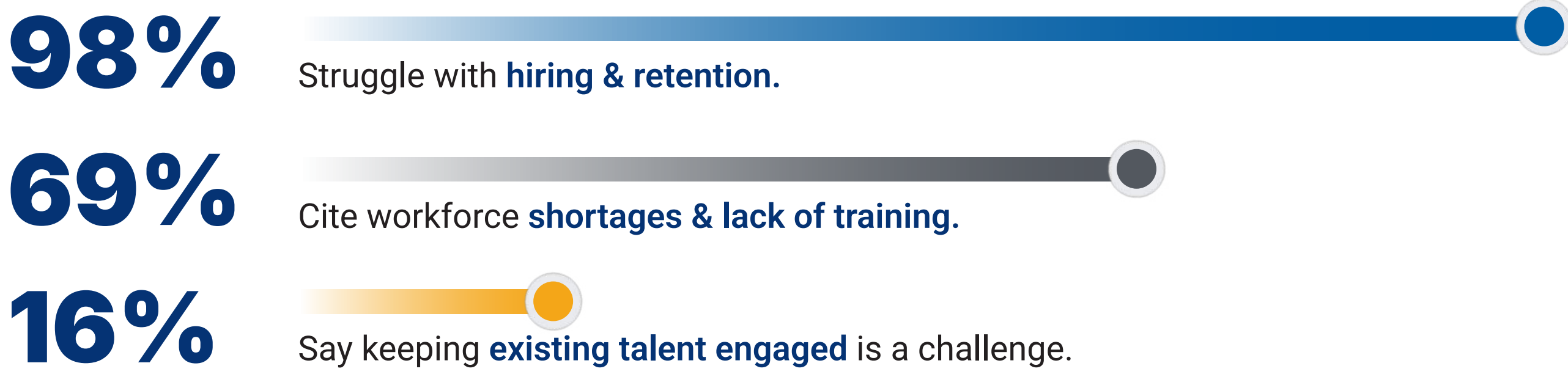


### The Power Industry's Top Challenges

#### Grid Pressures are Growing:



#### But the workforce crisis is even bigger:

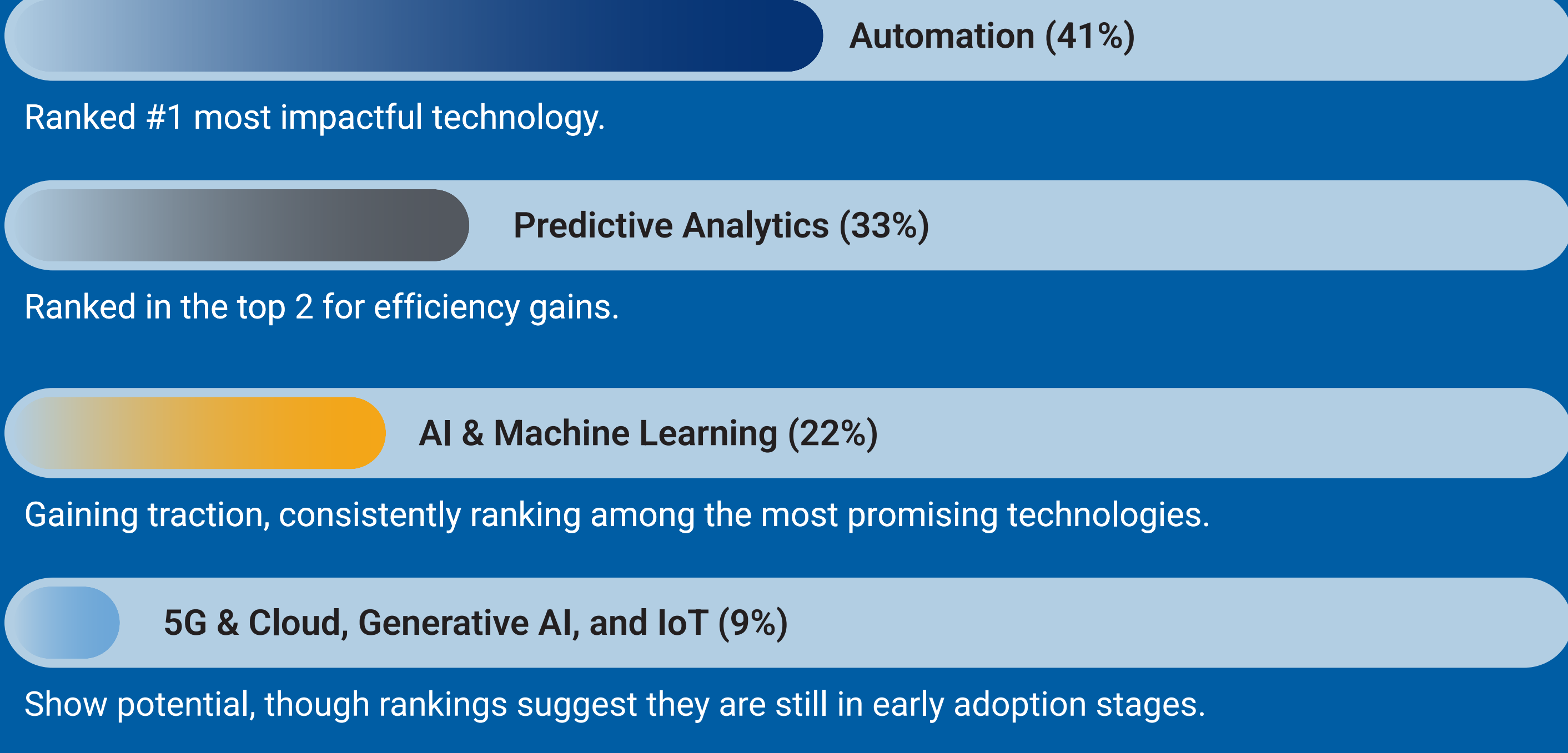


Workforce gaps threaten modernization efforts—hiring and upskilling are urgent priorities.

### AI Adoption is Accelerating



### Which Emerging Technologies Hold the Most Promise?



Power professionals see **automation** and **predictive analytics** as the **biggest drivers of efficiency**, while AI and emerging tech continue to gain momentum.



### Workforce Priorities & Skill Gaps

Power professionals report major workforce challenges, with leadership skills in highest demand and hiring as the #1 priority for 2025.

#### Top Skill Gaps



**67%** say **leadership & management skills** are in highest demand.



**41%** need more **engineering expertise**.



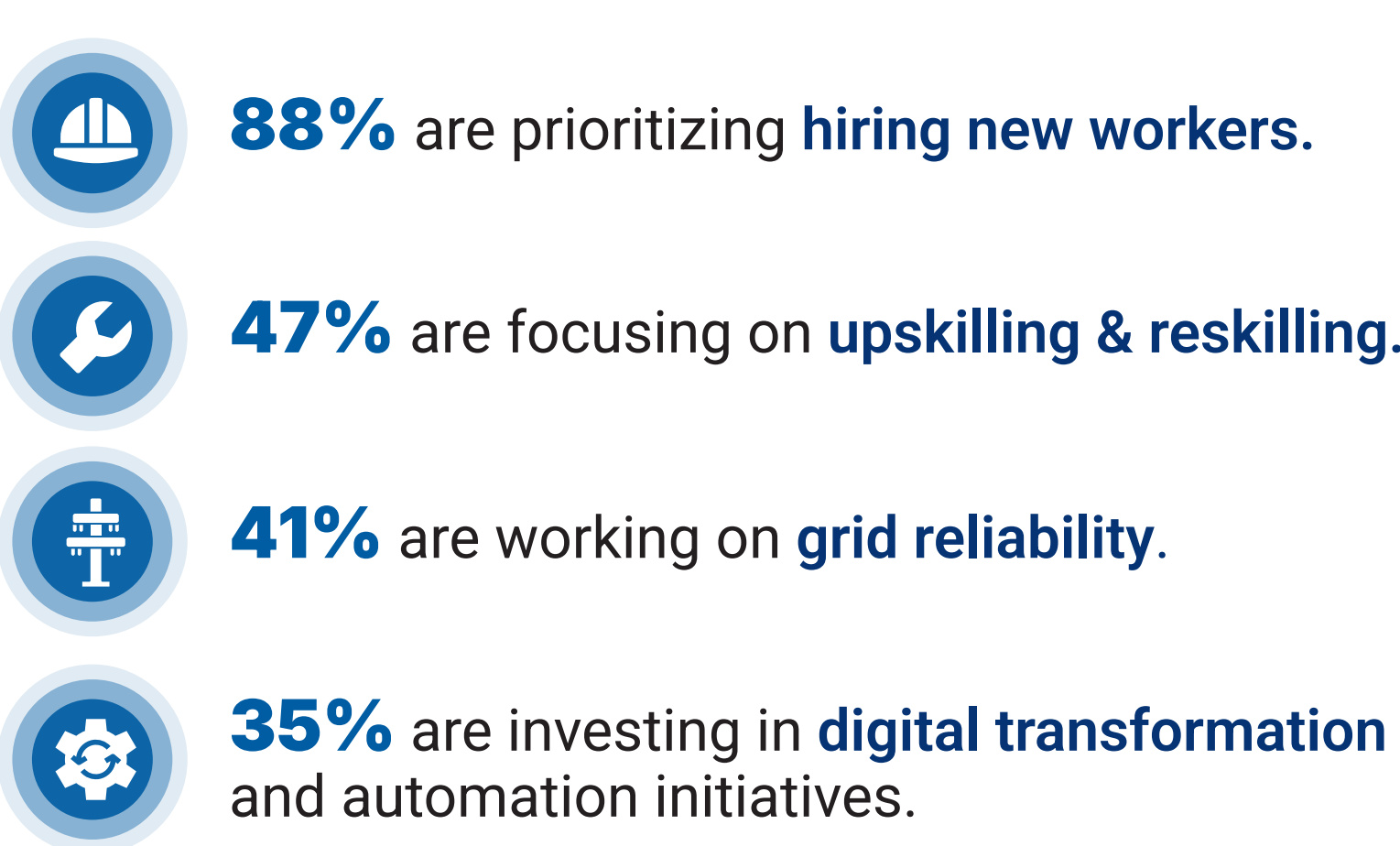
**20%** lack **data & analytics skills**.

#### Other gaps:

**29%** Theoretical    **27%** Soft Skills    **22%** Technical

Addressing these challenges is a major priority for teams in 2025.

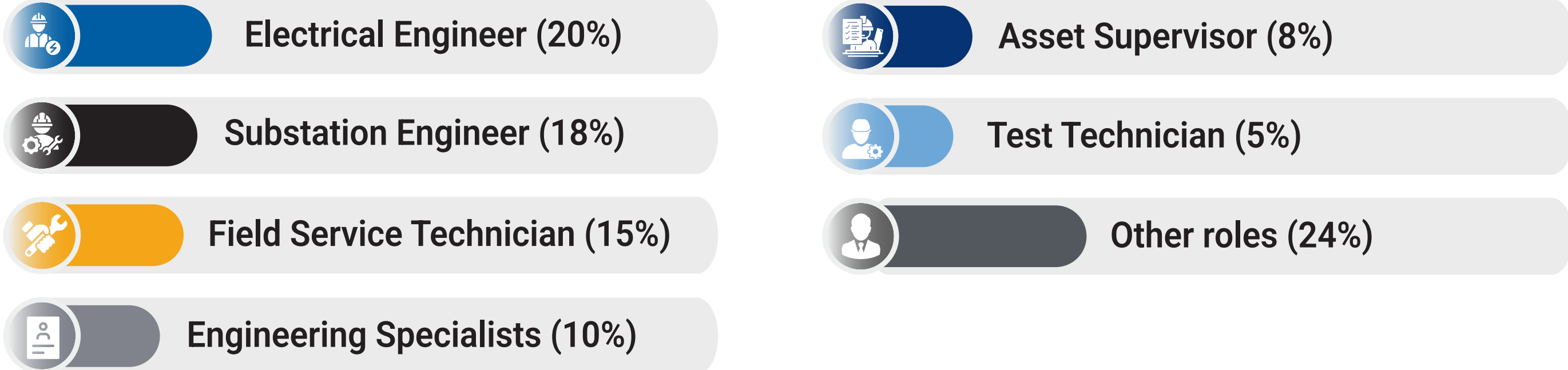
### 2025 Workforce Priorities



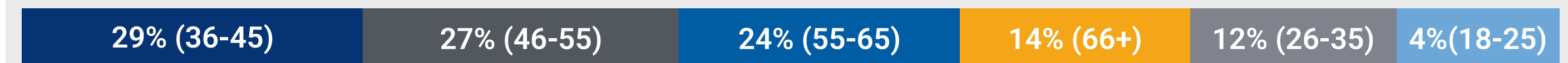
Hiring alone isn't enough—companies must invest in workforce development & training to address critical skill gaps and ensure long-term grid reliability.

#### Who Took This Survey?

### Industry Professionals Represented in the Survey



### Age Demographics



doble.com