



# USB Port Driver Installation Instructions for Windows 11

## Introduction

**NOTE:** The Windows USB Driver is compatible with Windows 10 version 1803 and above (x64).

The following instructions for USB driver installation are specifically for the Microsoft Windows 11 operating systems. Some steps may be different, and some screens may be changed depending on the version of Windows you are using.

These instructions apply to the following devices:

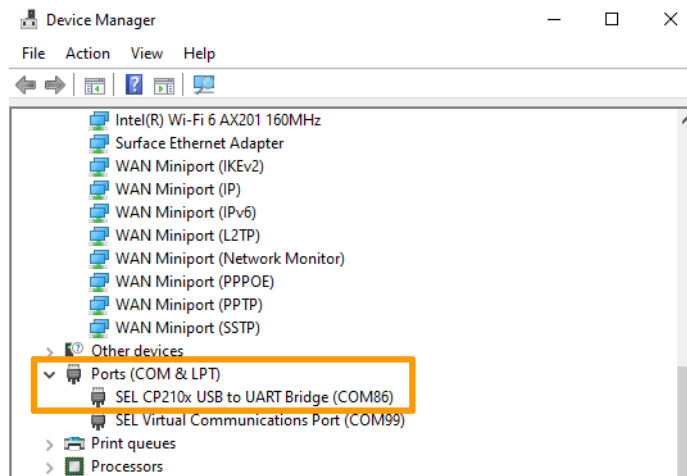
- SEL-C662 USB Serial Cables
- SEL-2440 Discrete Programmable Automation Controller (DPAC)
- SEL-3021 Serial Encrypting Transceiver
- SEL-3031 Serial Radio Transceiver
- SEL-9192 Utility-Grade USB Modem
- SEL-T4287 Traveling-Wave Test System

## Installing the USB Port Driver

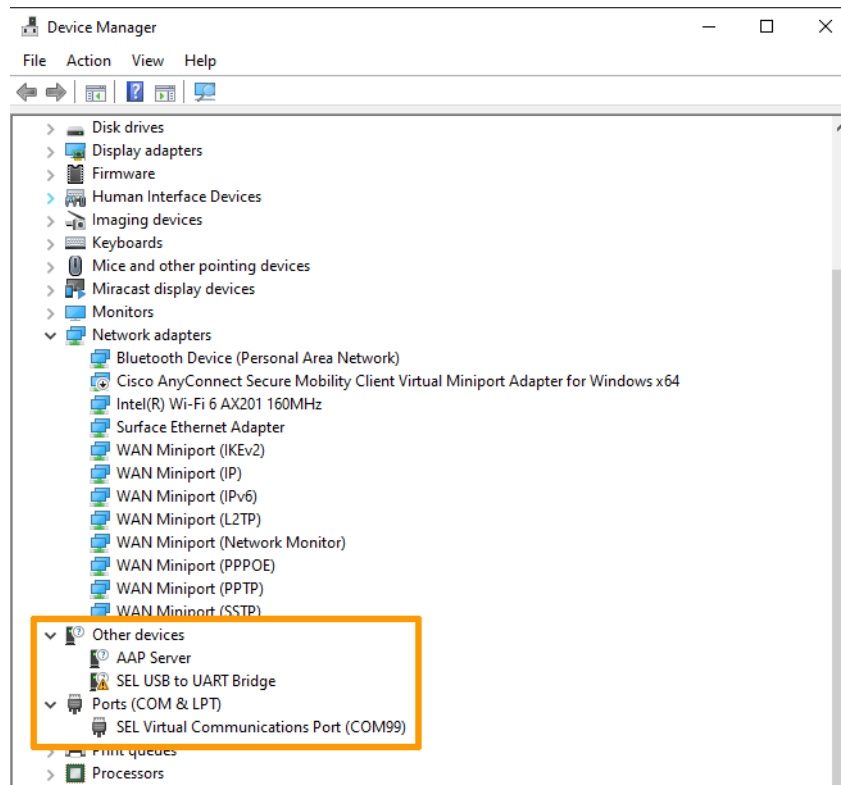
- Step 1. Retrieve the SEL CP210x USB to UART Bridge Driver folder from the Software Downloads page or the appropriate product page on the SEL website at selinc.com. Copy the folder to any convenient directory, such as C:\SEL\Drivers\Device\_USB\.

For instructions on verifying the authenticity of the file before installation, see *Appendix A: Verifying File Integrity*.

- Step 2. From the location to which you copied the folder in *Step 1*, right-click the **selvcp.inf** file, select **Install**, and follow the instructions.
- Step 3. Connect the device to your PC. For devices other than the SEL-C662 cable, connect the device to your PC with an SEL-C664 cable or any standard A-to-B USB cable.
- Step 4. Verify that the driver has been successfully installed. The SEL CP210x USB to UART Bridge should be listed in the **Device Manager** under **Ports (COM & LPT)**. If so, skip *Step 5* through *Step 9*.

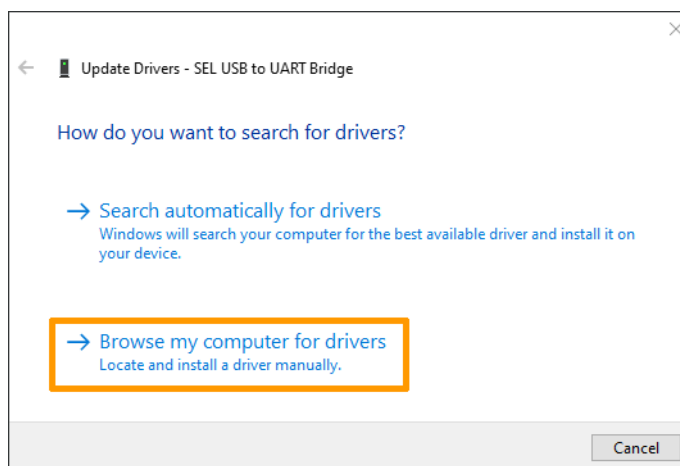


Step 5. If the driver did not install correctly, right-click **SEL USB to UART Bridge** and select **Update driver**.

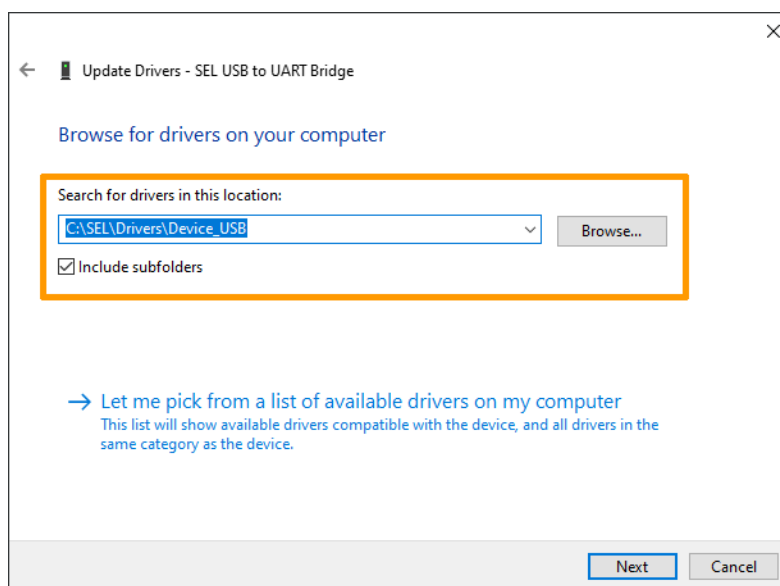


**NOTE:** For certain versions of Windows, the USB serial device may appear under **Other Devices** and may be labeled **SEL USB to UART Bridge**.

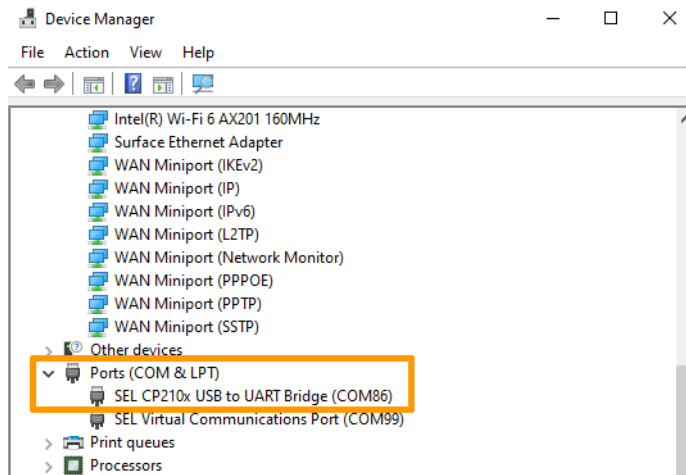
Step 6. Select **Browse my computer for drivers**.



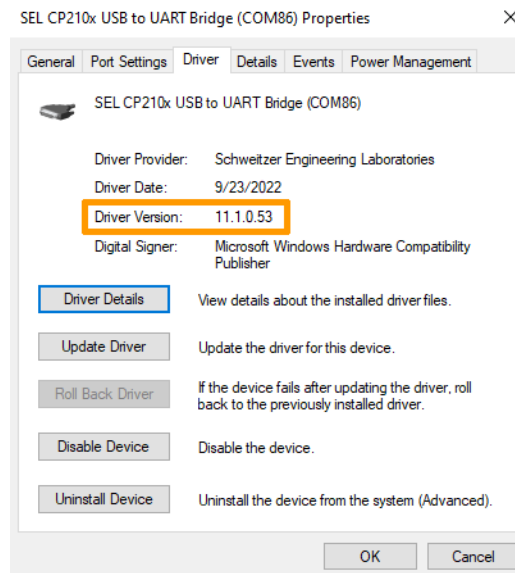
Step 7. Select **Browse** and open the location where you copied the SEL CP210x USB to UART Bridge Driver folder in *Step 1*. Ensure that the **Include subfolders** check box is selected. Select **Next**.



- Step 8. Verify that the driver has been successfully installed. The SEL CP210x USB to UART Bridge should be listed in the **Device Manager** under **Ports (COM & LPT)**.



- Step 9. To confirm the version information, double-click **SEL CP210x USB to UART Bridge (COMxx)** under **Ports (COM & LPT)** in the Device Manager and select the **Driver** tab to verify that Driver Version 11.1.0.53 is displayed.



## Testing the USB Port

**NOTE:** For more information, see the respective product instruction manual.

To test the USB port and newly installed driver, perform the following steps:

- Step 1. Launch ACSELERATOR QuickSet® SEL-5030 Software and either select **Communication** from the opening screen or select **Communications > Parameters** from the menu.
- Step 2. Select the new COM port created by the driver installation process (e.g., COM3).

- Step 3. Select **Communications > Terminal** from the menu or select the terminal icon (🖥️) on the tool bar.
- Step 4. Log in to the device normally.

## Uninstalling the USB Port Driver

---

- Step 1. Make sure the device is plugged in.
- Step 2. Open the Windows Device Manager by entering **device manager** in the Windows search bar and selecting **Device Manager**.
- Step 3. Locate the **SEL CP210x USB to UART Bridge** device under **Ports (COM & LPT)**.
- Step 4. Right-click the device and select **Uninstall**.
- Step 5. Follow the instructions.

## Technical Support

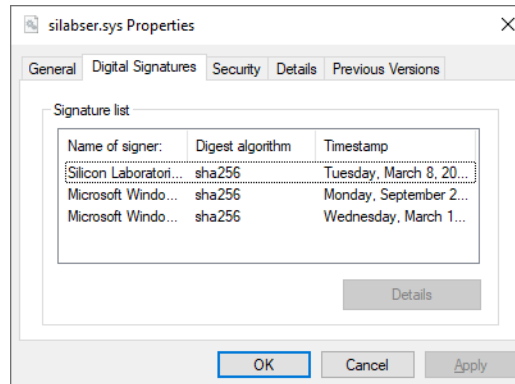
---

We appreciate your interest in SEL products and services. If you have questions or comments, please contact us at:

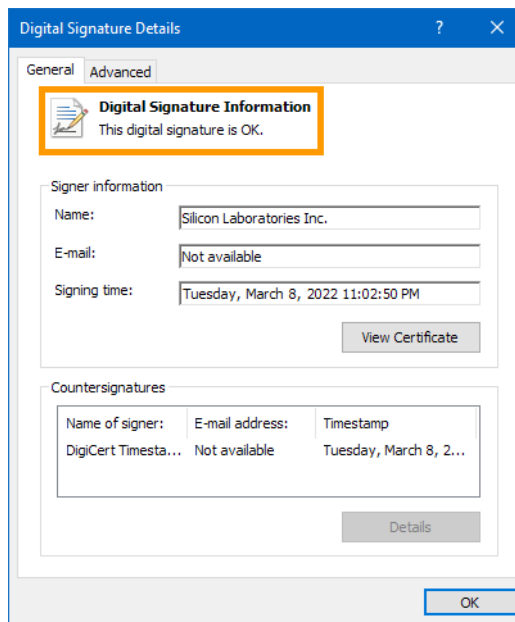
Schweitzer Engineering Laboratories, Inc.  
2350 NE Hopkins Court  
Pullman, WA 99163-5603 U.S.A.  
Tel: +1.509.338.3838  
Fax: +1.509.332.7990  
Internet: [selinc.com/support](http://selinc.com/support)  
Email: [info@selinc.com](mailto:info@selinc.com)

## Appendix A: Verifying File Integrity

To verify file integrity and authenticity before installation, open the directory to which you copied the folder in File Explorer, right-click the **silabser.sys** file and select **Properties**, and then select the **Digital Signatures** tab.



For each signature, select the signature and then select **Details**, and in the dialog box that appears, ensure that “This digital signature is OK.” is present.



© 2022 by Schweitzer Engineering Laboratories, Inc. All rights reserved.

All brand or product names appearing in this document are the trademark or registered trademark of their respective holders. No SEL trademarks may be used without written permission.

SEL products appearing in this document may be covered by U.S. and Foreign patents. Schweitzer Engineering Laboratories, Inc. reserves all rights and benefits afforded under federal and international copyright and patent laws in its products, including without limitation software, firmware, and documentation.

The information in this document is provided for informational use only and is subject to change without notice. Schweitzer Engineering Laboratories, Inc. has approved only the English language document.

**SCHWEITZER ENGINEERING LABORATORIES, INC.**

2350 NE Hopkins Court • Pullman, WA 99163-5603 U.S.A.

Tel: +1.509.332.1890 • Fax: +1.509.332.7990

selinc.com • info@selinc.com

