

F6 FPGA Field Programmer Reference Guide



This Manual is solely the property of the Doble Engineering Company (Doble) and is provided for the exclusive use of Doble Clients under contractual agreement for Doble Test equipment and services.

In no event does Doble assume the liability for any technical or editorial errors of commission or omission; nor is Doble liable for direct, indirect, incidental, consequential damages, or lost profits arising out of or the inability to use this Manual.

Government Restricted Rights Legend: Use, Duplication, or Disclosure by the U.S. Government is subject to restrictions as set forth in subparagraphs (c)(1) and (c)(2) of the Commercial Computer Software - Restricted Rights Clause at FAR 52.227-19.

This Manual is protected by copyright, all rights reserved. No part of this book shall be reproduced, stored in a retrieval system, or transmitted by any means, electronic, mechanical, photocopying, recording, or otherwise without express written permission from Doble.

Doble and the Doble logo are trademarks of Doble Engineering Company.

Microsoft, Windows, and Windows 10 are registered trademarks of Microsoft Corporation in the United States and/or other countries.

©1999-2022 Doble Engineering Company

All Rights Reserved

TP-F6FPGA-RG Rev B

06/2022

Introduction

This document covers the setup and use of the FPGA Field Programmer standalone tool for F6150sv CPU4.



Warning: Use the FPGA Standalone application ONLY with F6 CPU4. If you attempt to use the application with CPU3 or CPU2, the application will not work as intended.

Setup

Follow the below steps to set up the application:



Note: If you do not yet have the FPGA Tool file, go to <https://www.doble.com/support/downloads/fseries/>. Find and download file under the *Protection Suite* heading.

1. Extract the .zip FPGA_Standalone folder to a place on your PC. Enter the provided password when prompted to. Contact Doble support at **support@doble.com** if you do not have a password.
2. Open the *FPGA_Standalone.exe* file. The tool opens the following window:

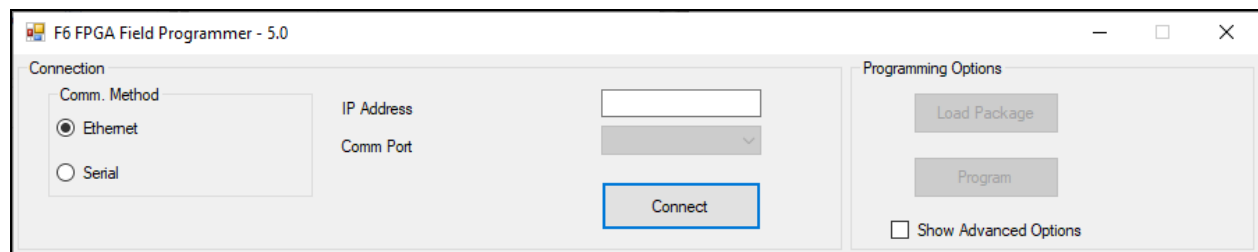


Figure 1 - F6 FPGA Field Programmer

The F6 FPGA Field Programmer is now ready for use.

Using the Tool

This standalone FPGA programming tool is used to update an F6150sv CPU 4 instrument to a new FPGA image. The download file includes the tool as well as the needed FPGA update file.



Note: It is strongly recommended to use an Ethernet connection when updating your FPGA images. USB can be used, but the update speed is far slower.

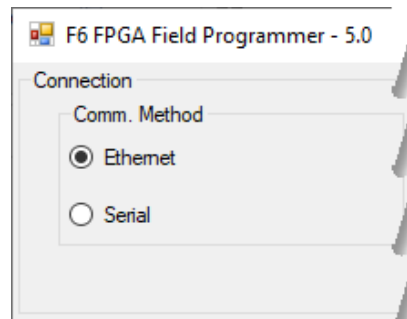


Figure 2 - F6 FPGA Field Programmer Comm. Method Designation

Connecting the Tool to your F6 CPU4

1. Enter the IP address of your F6 instrument in the designated field.

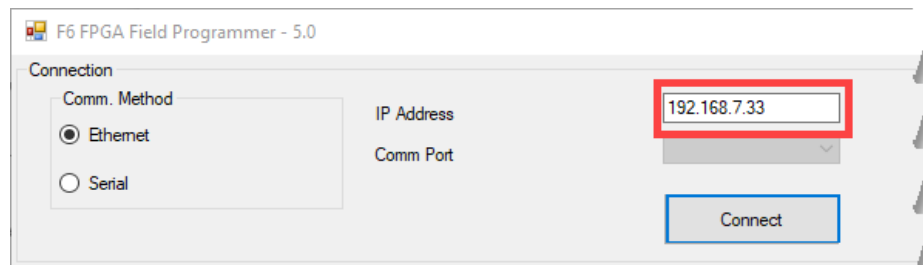


Figure 3 - IP Address Entry

2. Click **Connect**. The following window opens as the instrument resets and connects:

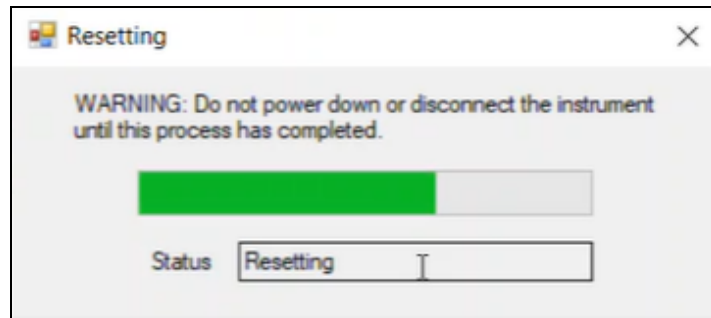


Figure 4 - Instrument Connection; Resetting Window

Wait for the progress bar to fill. Once it does, a similar window labeled **Scanning** opens. Wait for the progress bar to fill. Once it does, the connection is made and the **Connect** button should now read **Disconnect**.

Updating to a New FPGA Image

You can check the current FPGA version by opening Protection Suite to the **Instrument→Connect/Verify** tab and clicking the ... next to your instrument on the **Instrument Activity** table. The FPGA file for this tool corresponds with **F6870 Sampled Values Publication**. An update is needed if the version is earlier than v1.1.



Note: Disconnect GPS antenna from the F6 instrument before updating your FPGA.

1. Click **Load Package**. A file browser window opens.
2. Navigate to the location of the desired.fkpg file. Select it and click **Open**.

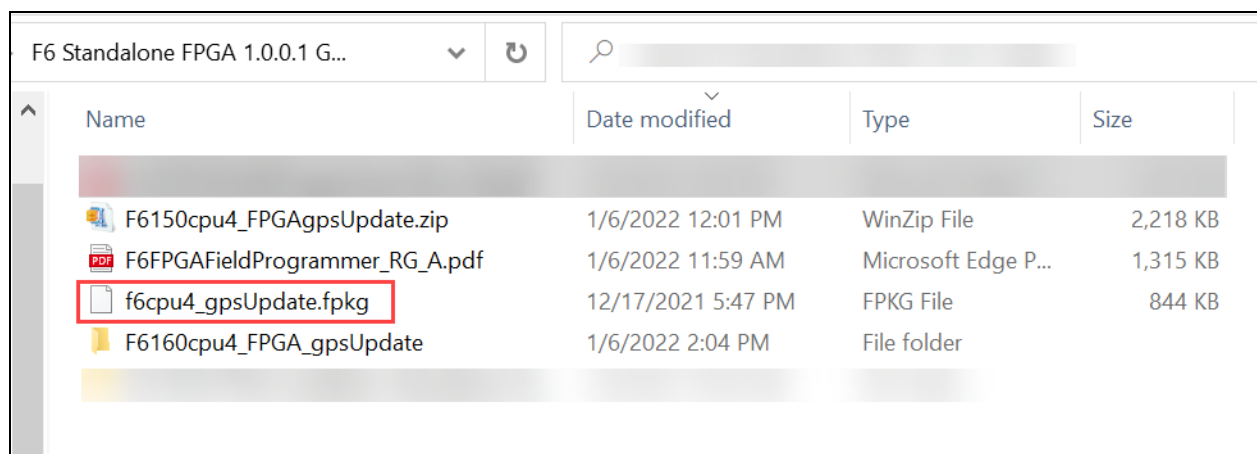


Figure 5 - Browse for FPGA Update File

3. Click **Program**. A window opens labeled **Programming**, with a progress bar and status. Wait for the programming to complete. Once it is complete, a window opens directing you to reboot the instrument.

- If your FPGA is already up to date, the tool reports that no updates are available:

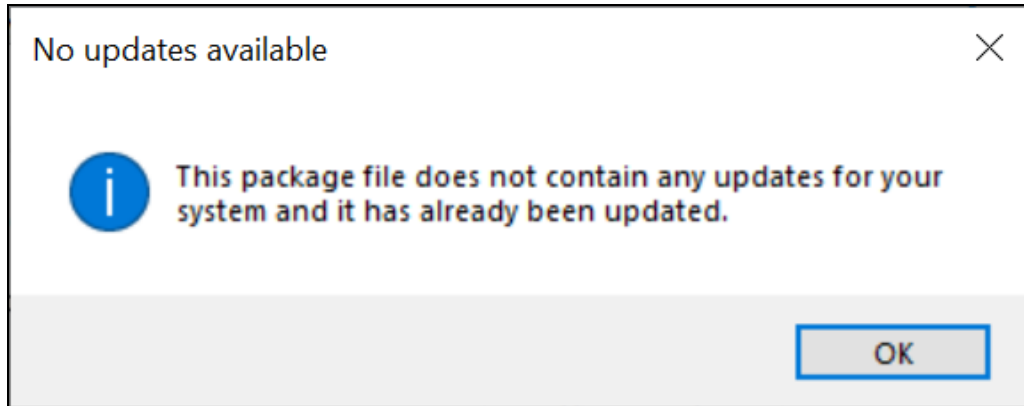


Figure 6 - No Updates Available Message

4. Reboot the instrument, then click **OK** on the **Reboot** window. Wait for the instrument to reconfigure; once it has, the following message is displayed:

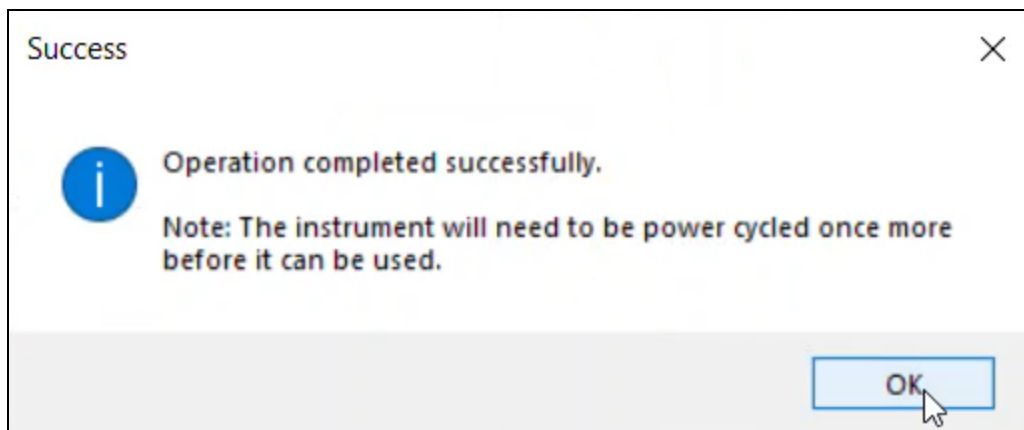


Figure 7 - FPGA Program Success

5. Power cycle the F6 instrument once more. Once done, the FPGA update process is complete.

- **For F6150sv with F6870 option:** Verify the update by opening Protection Suite to the **Instrument→Connect/Verify** tab and clicking the ... next to your instrument on the **Instrument Activity** table. In this example, the update can be verified by checking for the **(F6870) Sampled Values Publishing** option in the list:

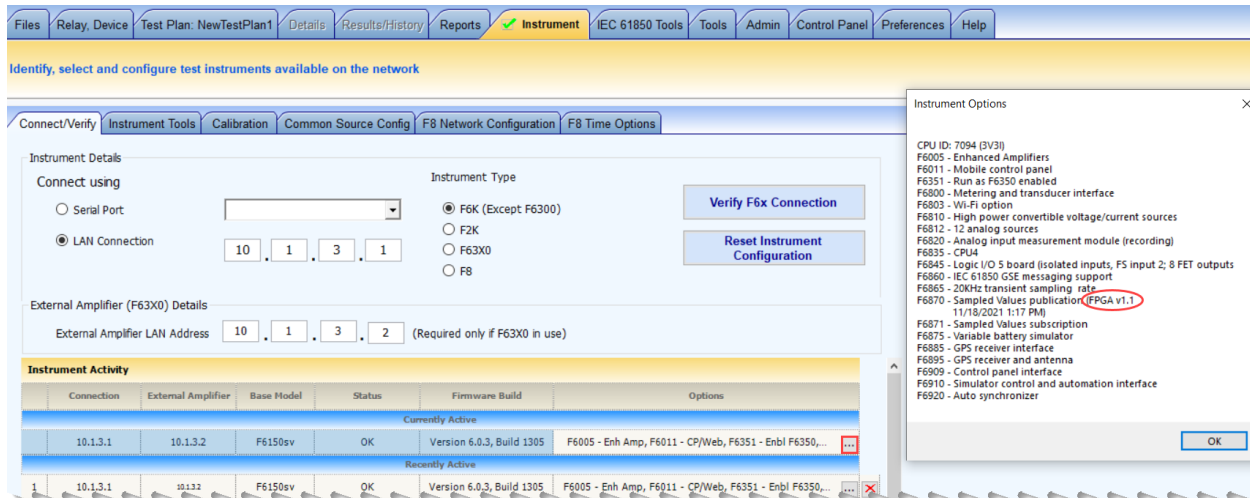


Figure 8 - Protection Suite; Instrument Options

If you are unable to verify the update by checking for the F6870 option, try connecting your GPS antenna to the test instrument. If the F6150 test instrument shows the UTC time, you can be sure that the update was successful, assuming that there are no issues with the GPS antenna itself or the signal strength.

A. LEGAL NOTICE

Warranty

Equipment Limited Warranty

Doble Engineering Company (DOBLE) warrants the products that it manufactures to be free from defects in material and workmanship for a period of one year from the date shipped from the factory.

During the one year warranty period, DOBLE will repair or replace, at its option, any defective products or components thereof at no additional charge, provided that the product or component is returned, shipping prepaid, to DOBLE. The Purchaser is responsible for insuring any product or component so returned and assumes the risk of loss during shipment. All replaced products and components become the property of DOBLE.

THIS LIMITED WARRANTY DOES NOT EXTEND TO ANY PRODUCTS WHICH HAVE BEEN DAMAGED AS A RESULT OF ACCIDENT, MISUSE, ABUSE, OR AS A RESULT OF MODIFICATION BY ANYONE OTHER THAN DOBLE OR AN AUTHORIZED DOBLE REPRESENTATIVE.

EXCEPT AS EXPRESSLY SET FORTH ABOVE, NO OTHER WARRANTIES, EXPRESSED OR IMPLIED, ARE MADE WITH RESPECT TO THE PRODUCT INCLUDING, BUT NOT LIMITED TO, ANY IMPLIED WARRANTIES OF MERCHANTABILITY AND FITNESS FOR A PARTICULAR PURPOSE. DOBLE EXPRESSLY DISCLAIMS ALL WARRANTIES NOT STATED HEREIN. IN THE EVENT THE PRODUCT IS NOT FREE FROM DEFECTS AS WARRANTED ABOVE, THE PURCHASER'S SOLE REMEDY SHALL BE REPAIR OR REPLACEMENT AS PROVIDED ABOVE. UNDER NO CIRCUMSTANCES WILL DOBLE BE LIABLE TO THE PURCHASER OR ANY USER FOR ANY DAMAGES, INCLUDING WITHOUT LIMITATION, PERSONAL INJURY OR PROPERTY DAMAGE CAUSE BY THE PRODUCT, ANY INCIDENTAL OR CONSEQUENTIAL DAMAGES, EXPENSES, LOST PROFITS, LOST SAVINGS, OR OTHER DAMAGES ARISING OUT OF THE USE OF OR INABILITY TO USE THIS PRODUCT.

Software Limited Warranty

THIS SOFTWARE PRODUCT IS PROVIDED "AS IS" WITHOUT WARRANTY OF ANY KIND, EITHER EXPRESSED OR IMPLIED, INCLUDING, BUT NOT LIMITED TO, THE IMPLIED WARRANTIES OF MERCHANTABILITY AND FITNESS FOR A PARTICULAR PURPOSE. THE ENTIRE RISK AS TO THE QUALITY AND PERFORMANCE OF THIS SOFTWARE PRODUCT IS WITH PURCHASER SHOULD THE PRODUCT PROVE DEFECTIVE. PURCHASER (AND NOT DOBLE OR AN AUTHORIZED DEALER) ASSUMES THE ENTIRE COST OF ALL NECESSARY SERVICING, REPAIR, OR CORRECTION.

Some states do not allow the exclusion of implied warranties, so the above exclusion may not apply. This warranty gives the purchaser specific legal rights and the purchaser may also have other rights which vary from state to state.

DOBLE warrants the disks on which the software product is furnished to be free from defects in materials and workmanship under normal use for a period of one hundred and twenty (120) days from the date of shipment from DOBLE.

Limitations of Remedies

DOBLE's entire liability and Purchaser's exclusive remedy shall be:

The replacement of any disks not meeting DOBLE's "limited warranty" which are returned to DOBLE.

If DOBLE is unable to deliver replacement disks which are free from defects in materials and workmanship, Purchaser may terminate this agreement. By returning the software product and all copies thereof in any form and affirming compliance with this requirement in writing, DOBLE will refund the purchase price.

IN NO EVENT WILL DOBLE BE LIABLE TO PURCHASER FOR ANY DAMAGES, INCLUDING ANY LOST PROFITS, LOST SAVINGS OR OTHER INCIDENTAL OR CONSEQUENTIAL DAMAGES ARISING OUT OF THE USE OR INABILITY TO USE SUCH SOFTWARE PRODUCT, EVEN IF DOBLE OR AN AUTHORIZED DEALER HAS BEEN ADVISED OF THE POSSIBILITY OF SUCH DAMAGES, OR FOR ANY CLAIM BY ANY OTHER PARTY.

Some states do not allow the limitation or exclusion of liability for incidental or consequential damages, so the above limitation or exclusion may not apply.

For equipment maintenance, contact:

Doble Engineering Company Telephone: 617-926-4900

123 Felton St, Marlborough MA 01752(USA)

Email: support@doble.com

Web: www.doble.com