



October 3, 2022

For more information contact
support@doble.com

Obtaining and Updating Firmware for F6 Instruments

This application note describes the process for updating Doble F6 instruments. It is Doble's policy that you use the latest firmware release; you will benefit from the latest feature upgrades, bug fixes, and software compatibility.

Note: it is **no longer necessary to match firmware versions** for end-to-end testing. Doble has provided a start-delay setting in the instrument web-based configuration page (available with a web browser connected to the instrument IP address). Contact support@doble.com for more information.

You must have a connection to the Internet to download the firmware. You must have an e-mail account to receive the unzip password. When requesting the firmware password contact support@doble.com. Include your serial number(s) and use your business e-mail address.

The instrument displays the CPU_n number (n is a numeral indicating the hardware-revision number) and the installed firmware version on the vacuum-fluorescent display after applying power to the instrument. The firmware differs for each hardware revision:

CPU3/4: v6.nn
CPU2: v4.nn
CPU1: v2.23

Be sure to download and update the correct firmware for your instrument hardware revision.

Firmware Update Process

Complete the following steps to update the instrument firmware:

- 1) Apply power to the instrument
- 2) Decide the firmware that you need:
- 3) CPU3/4: v6.nn
- 4) CPU2: v4.nn
- 5) CPU1: v2.23
- 6) Open a web browser
- 7) Navigate to the protection download page (Figure 1) at <https://www.doble.com/support/downloads/fseries/>

Doble Application Note

F Series Current Products

Download the latest power system simulator user guides, software, firmware and drivers. (Password required where indicated).

Want to stay informed about Doble's Protection Product/Software updates?

Subscribe to our [protection email list](#) to get notified about Doble Protection software, firmware and security updates.

HARDWARE USER GUIDES

[F6 Hardware User Guide](#)
[F6080 User Guide](#)
[F6816 User Guide](#)
[F5850 User Guide](#)
[F6052 User Guide](#)

SOFTWARE

[Protection Suite](#)
[F6080 Calibration Software for F6 Instruments](#)
[F6080 for F2 Instruments](#)
[F6 Multiple Amplifier Configurator](#)
[F6TesT](#)
[61850 TesT](#)
[F6011 Mobile Control Panel](#)

FIRMWARE

[Updating Firmware for F6 Instruments](#)
[F6 CPU3/4 Firmware](#)
[F6 CPU3 Firmware](#)
[F6 CPU2 Firmware](#)
[F6 CPU1 Firmware](#)

DRIVERS

[F6080 Windows 7 Driver for USB RS232 Cable](#)
[USB Driver For The Updated F6150 \(CPU2 and CPU3\) Front Panel](#)

Figure 1. F-Series firmware-download section at <https://www.doble.com/support/downloads/fseries/>

- 8) Select the link for the firmware that you need. Review the instructions listed at the link
- 9) Request the firmware password from support@doble.com (per the instructions)
- 10) Click on the firmware name to download the **.zip** file to your computer
- 11) Read the return e-mail from Doble that contains the unzip password. Copy this password

Note: Be careful to copy only the characters in the password. Spaces at the beginning or end of the password being copied accidentally is a common issue—avoid it.

- 12) Open a Windows Explorer window and navigate to the downloaded **.zip** file (see Figure 2)

Doble Application Note

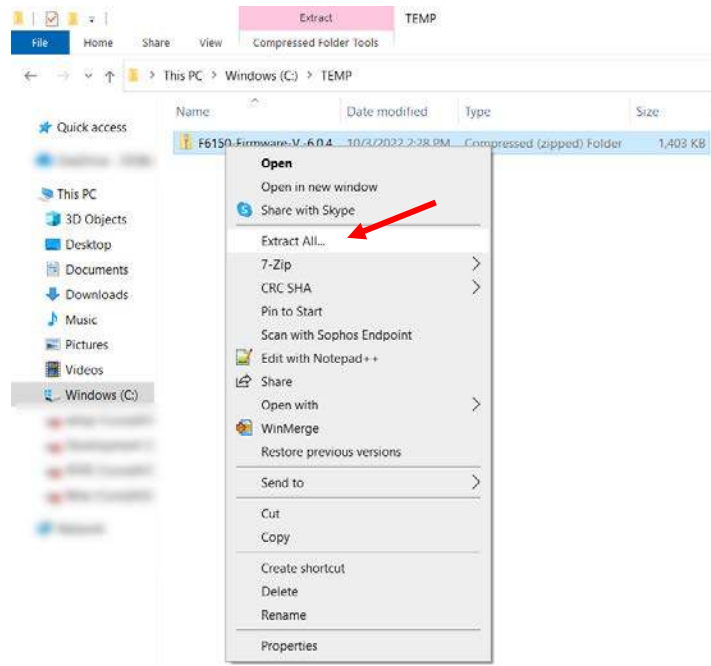


Figure 2. Extract (unzip) the downloaded file

13) Extract (unzip) the file with the supplied password. Create a folder in which to place the extracted files (for example: C:\TEMP\)

Note: Use Winzip or the Microsoft Windows Extract tool only. Other tools may modify the file structure.

14) Make a note of this folder location and the resulting file “.pkg.” Figure 3 shows an example of the unzipped firmware file (and the unzipped release-notes file)

Note: Other files exist in the extracted folder. The firmware-update process uses only the .pkg file.

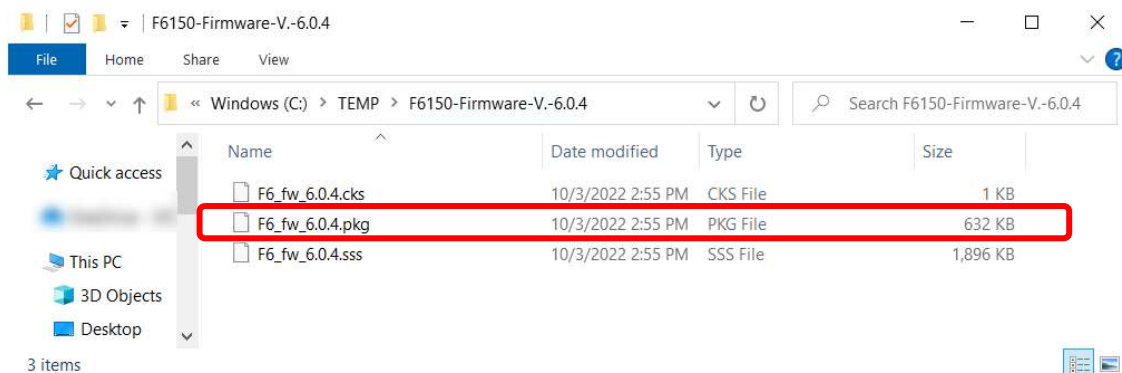


Figure 3. Unzipped F6 CPU3 firmware files and release notes

15) Open Protection Suite

16) Navigate to Instrument > Connect, Verify (format is “top tab > bottom tab”) (see Figure 4)

Doble Application Note

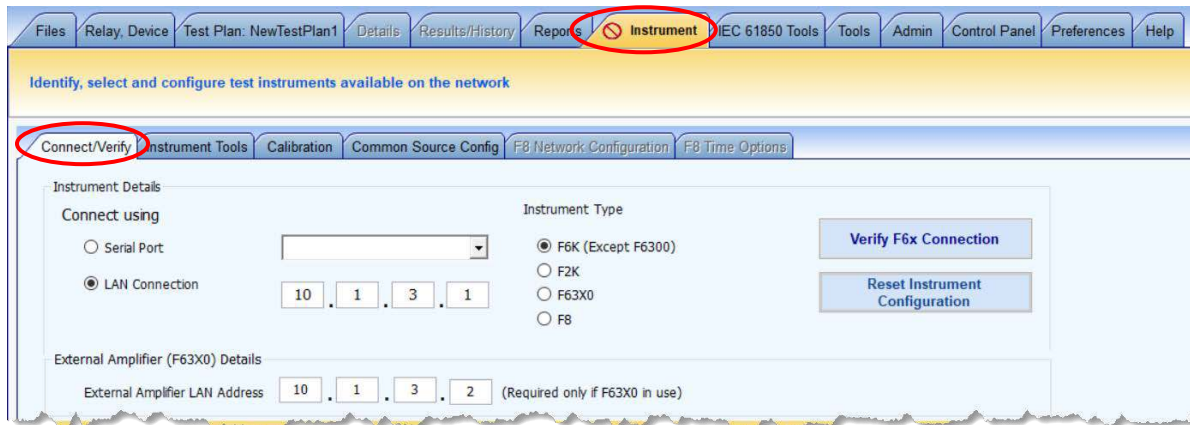


Figure 4. Connect to the F6150 instrument

- 17) Select the Instrument Type corresponding to the F-series instrument that you are updating
- 18) Click on Verify F6x Connection to connect to the instrument
- 19) Click the box with the ellipsis (three dots) to view the instrument options (see Figure 5)
- 20) Record the instrument options (a screenshot or photograph works well)

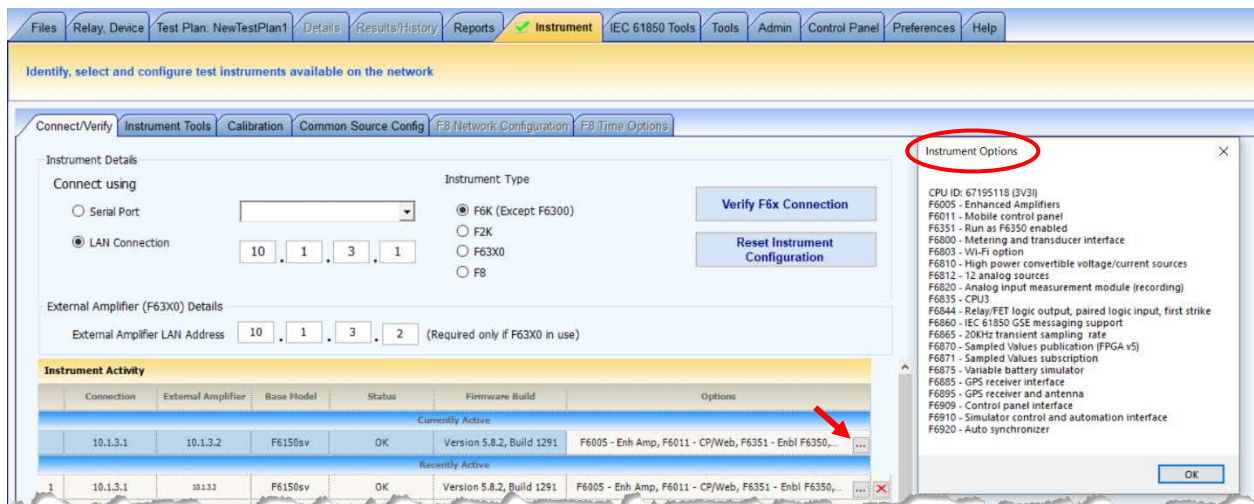


Figure 5. F6150 instrument options before firmware update

Note: This step is a precaution, to compare options on the F6150 instrument after the firmware update.

- 21) Navigate to Instrument > Tools or *Instrument Tools* on newer Protection Suite versions
- 22) Choose Update Capability Key (in the F6 Instrument Tools section, shown in Figure 6)

Doble Application Note

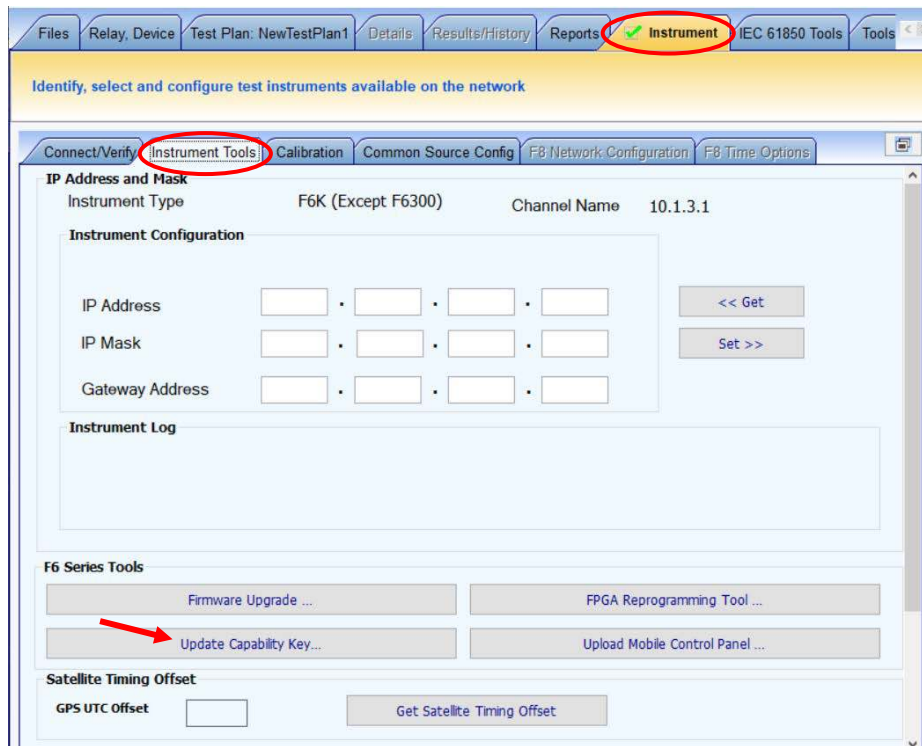


Figure 6. Location of “Update Capability Key” button

Note: On Protection Suite version 5.2.0, the Update Capability Key is available on Tools, F6 Series, shown in Figure 7

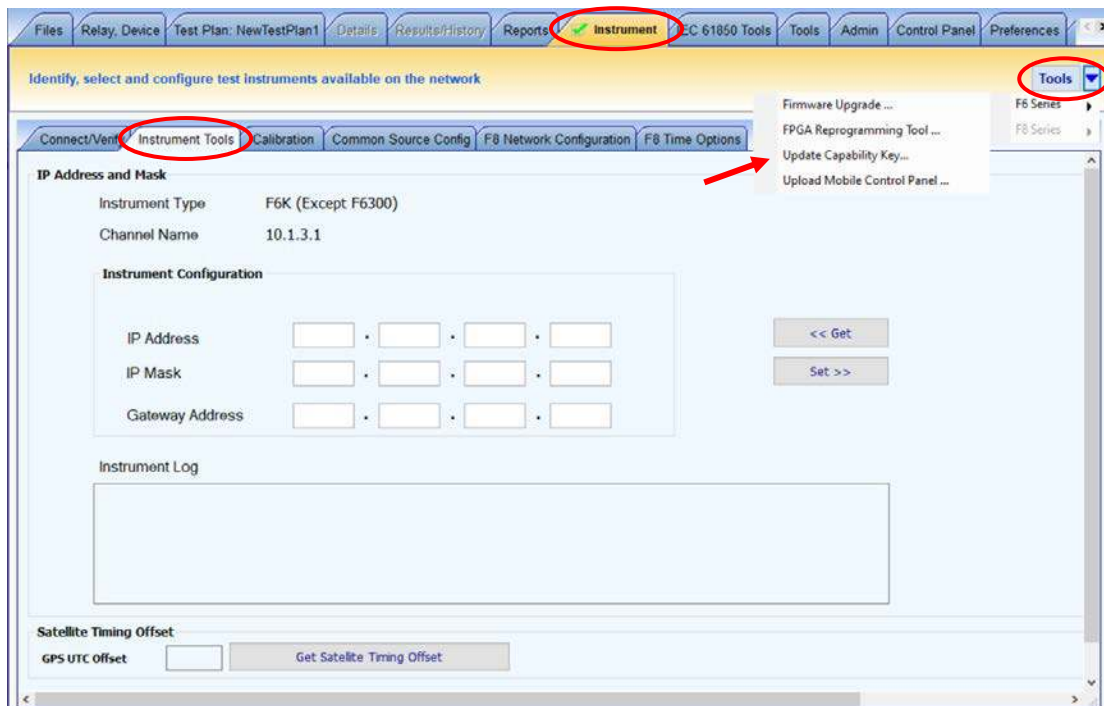


Figure 7. Location of “Update Capability Key” button on Protection Suite version 5.2.0

Doble Application Note

23) Record the Installed Key number (a screenshot or photograph works well)

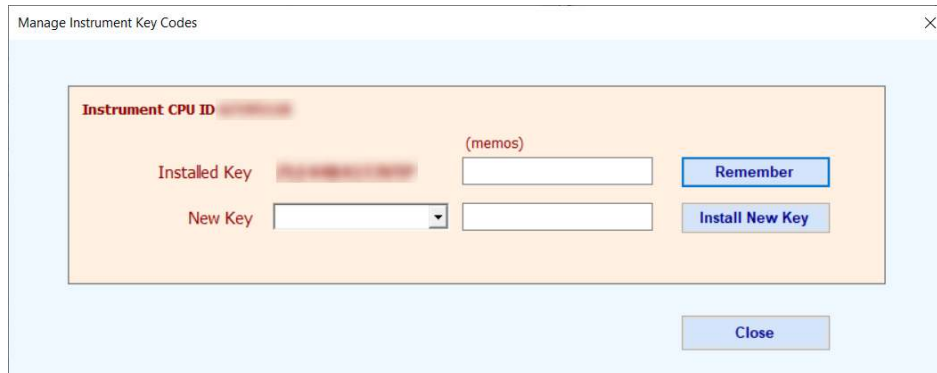


Figure 8. Location of "Installed Key" number

24) Navigate to Instrument > Tools or Instrument Tools on newer Protection Suite versions

25) Choose Firmware Upgrade (in the F6 Tools section, shown in Figure 9)

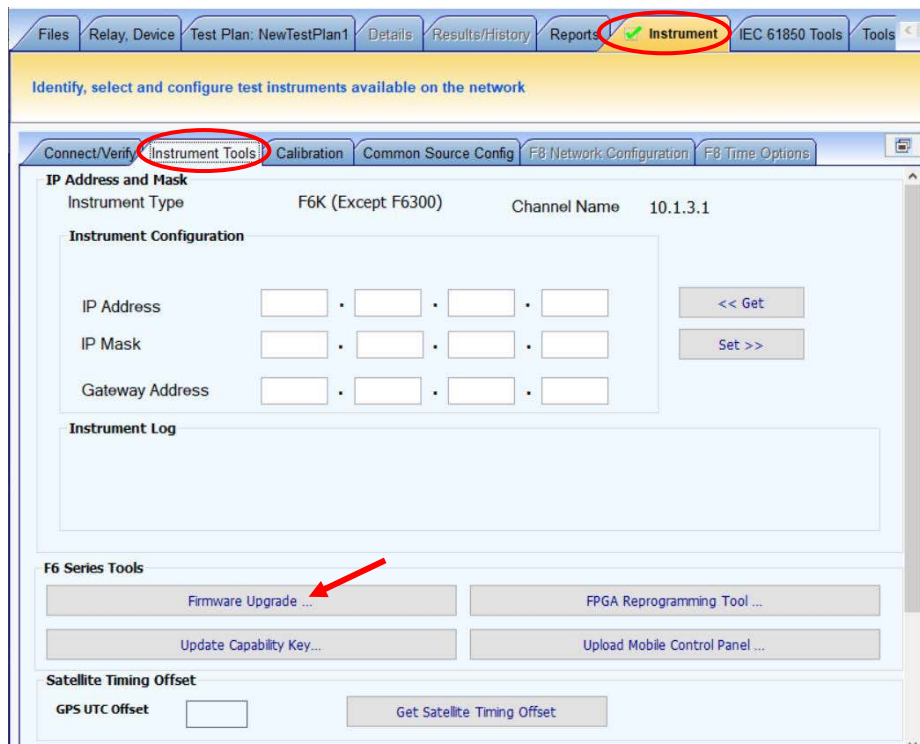


Figure 9. Location of "Firmware Upgrade" button

26) Observe the Flash Loader, shown in Figure 10

Doble Application Note

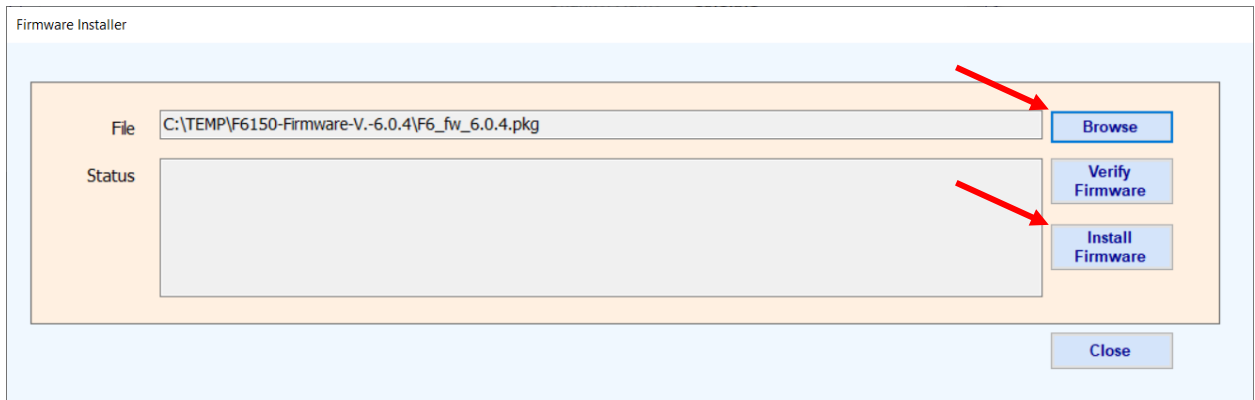


Figure 10. Flash Loader example for F6 CPU3 (Protection Suite 5.2.5 and later)

27) Browse to the folder that contains the **.pkg** file identified in Step 14)

28) Select the **.pkg** file

Note: the Verify function checks the downloaded firmware file against the installed firmware—routine updates. Do not use this function.

29) Click Program

Caution: Do not disturb the file upload while in progress (keep cables attached and power applied continuously).

Note: do not use a Wi-Fi connection for the firmware upgrade process. The firmware upgrade process takes a few seconds when using a hardwire Ethernet cable, and a few minutes when using a serial (USB) cable.

30) Power cycle the instrument when prompted. Wait a few seconds when powering the test set on again

31) Observe that the front-panel, vacuum-fluorescent display shows the new firmware version during the boot process

32) Wait for five seconds after the instrument fans reduce speed

33) Navigate to Instrument > Connect, Verify (format is “top tab > bottom tab;” see Figure 11)

Doble Application Note

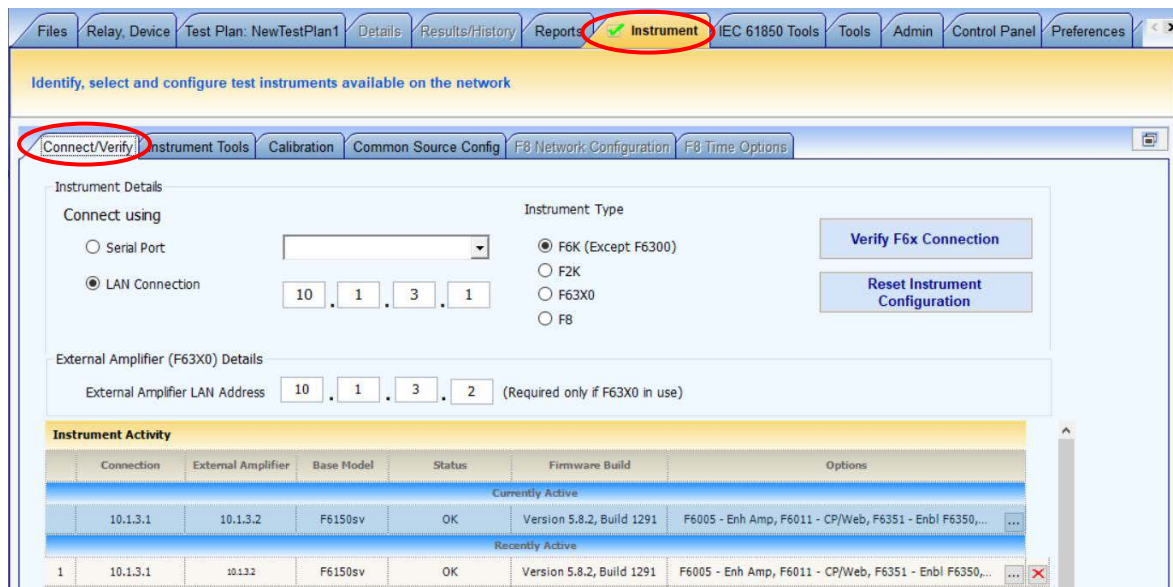


Figure 11. Reconnect to the F6150 instrument

- 34) Select the Instrument Type corresponding to the F-series instrument that you are updating
- 35) Click on Verify F6x Connection to reconnect to the instrument
- 36) Click the box with the ellipsis (three dots) to view the instrument options (see Figure 12)

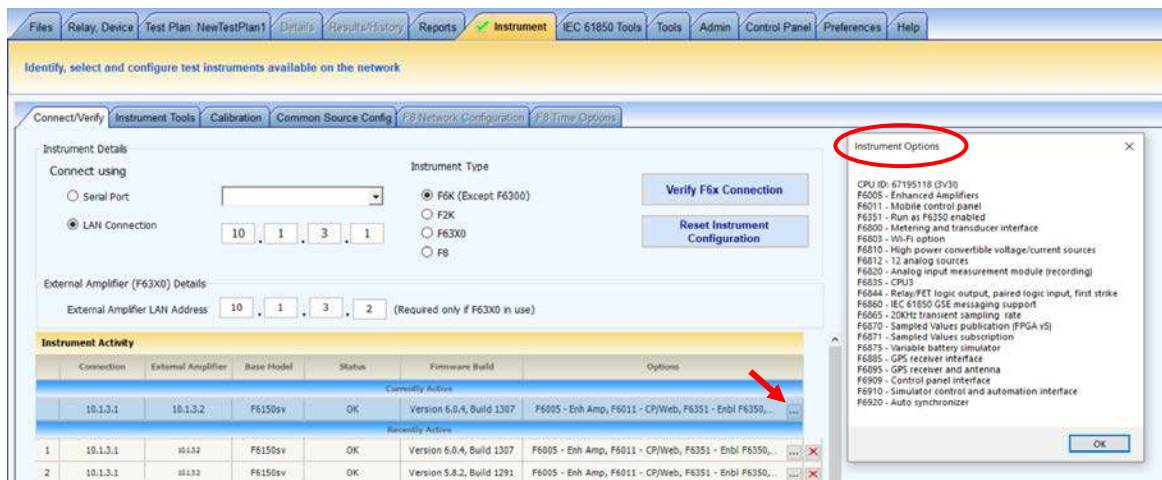


Figure 12. F6150 CPU3 instrument options after update

- 37) Check that the Instrument Options after the firmware update are the same as the ones before the firmware update. If an option is missing, load the installed key number recorded on step 23) by using the Update Capability Key option; insert the recorded key on the New Key box followed by a click on Install New Key button. Power cycle the F6150 test instrument.

Doble Application Note

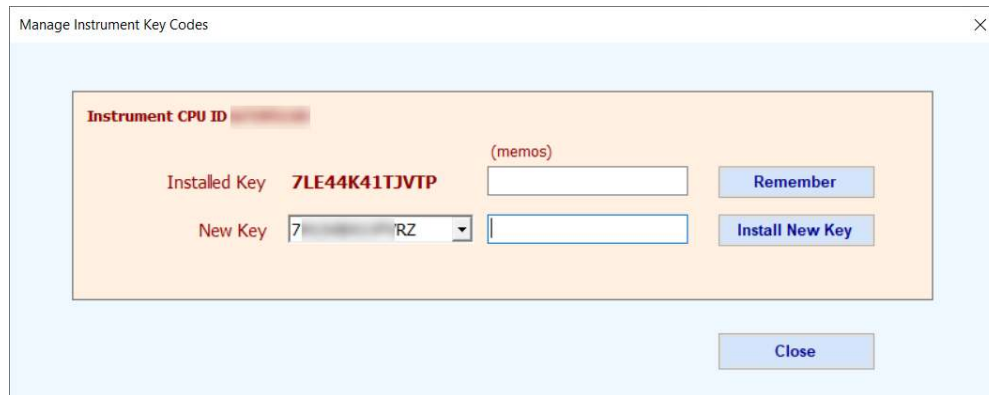


Figure 13. Installing new key code after update

38) If the F6150 still miss an option after the key code install, e-mail the following information to support@doble.com :

- F6150 instrument serial number
- F6150 CPU ID
- Documentation of the Instrument Options before the firmware update (screenshot or photograph)
- Documentation of the Instrument Options after the firmware update (screenshot or photograph)

Note: when updating multiple F6150s at the same time, be sure to gather the information above for each F6150 instrument separately.

Troubleshooting

Although it seldom occurs, it is possible to “brick” an instrument upon uploading new firmware (front-panel display does not appear upon restoring power). Another possibility is sending the incorrect F6 CPU firmware version (v4 to CPU3 v6, or v6 to CPU2 v4). In this case, the front-panel display shows a message similar to Figure 14.



Figure 14. F6150 CPU2 instrument invalid-image error message after update

There is a process for recovering from these conditions. Contact support@doble.com or view the F6 Hardware User Guide for instructions on recovery from flash-load failure: Flashload Failure Recovery Techniques.

Doble Application Note

Contact Us

Please contact us if you have any questions regarding this release or any other Doble Engineering Company protection-testing product:

- Telephone: US +1 617 926 4900
- Fax: US +1 617 926 0528
- E-Mail: support@doble.com

