

***M4000 LEAKAGE
REACTANCE SOFTWARE
VERSION 2.1***

Marketing Release Notice



Doble Engineering Company

*85 Walnut Street
Watertown, Massachusetts 02472-4037 (USA)*

Telephone: +1 617.926.4900

FAX: +1 617.926.0528

P/N 500-0473

72A-2350 Rev A.

Doble Engineering Company

All Rights Reserved

This notice is solely the property of the Doble Engineering Company (Doble) and, along with M4000 PC software to which it applies is provided for the exclusive use of Doble Clients and Customers in possession of an M4100 instrument.

In no event does the Doble Engineering Company assume the liability for any technical or editorial errors of commission or omission; nor is Doble liable for direct, indirect, incidental, or consequential damages arising out of or the inability to use this Manual.

Government Restricted Rights Legend: Use, Duplication, or Disclosure by the U.S. Government is subject to restrictions as set forth in subparagraphs (c)(1) and (c) (2) of the Commercial Computer Software – Restricted Rights Clause at FAR 52.227-19.

All rights reserved. No part of this book shall be reproduced, stored in a retrieval system, or transmitted by any means, electronic, mechanical, photocopying, recording, or otherwise without written permission from the Doble Engineering Company.

Doble, the Doble logo, M4000 Software, and M4000 are trademarks of Doble Engineering Company.

Microsoft, Windows, Windows98, Windows NT, Windows 2000 and Windows XP are registered trademarks of Microsoft Corporation in the United States and/or other countries.

Copyright © 2004

By Doble Engineering Company

All Rights Reserved

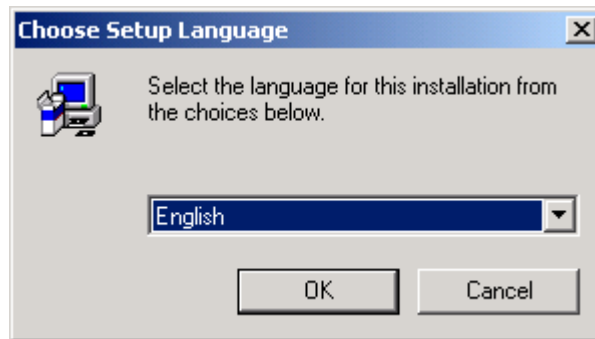
Introduction

M4000 Leakage Reactance Software Version 2.1 is being release to support changes in M4000 software Version 3.1.

- The Leakage Reactance is being distributed in floppy disk version. The floppy disk version consists of 1 disks.
- In order to use this software application, the PC/M4200 Controller must have M4000 PC software version 3.1. This version of the Leakage Reactance software will not run with prior versions of the M4000 software.
- The application has been tested on the following operating systems: Windows' 98, NT 4.0, 2000 and XP.

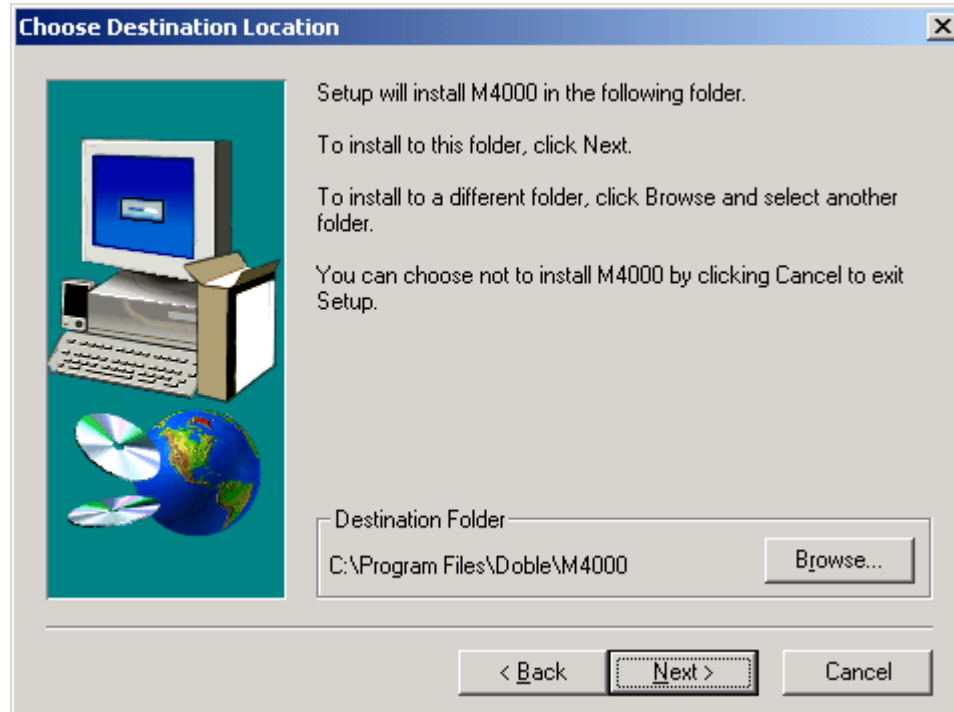
Installing Version 2.1

- To run the installation program select, the Run... option on the Start menu. In the window that appears, type in the directory path to where the installation program resides with \setup appended to it; for example if using the floppy disk version, type <A:\setup>
- The next window that appears will request the user to specify the language in which to perform the installation. The user will be asked to specify a number of settings, and the questions will be presented in the language specified here.



- The Welcome screen will appear next. Read the advisory and if suitable select <Next>.
- The user will be asked to acknowledge the software license agreement. If acceptable, choose <Yes>.

- The next screen will ask the user to specify which Leakage Reactance module/interface will be used to perform the testing. The choices are M4110 and M4130. Once the appropriate hardware is selected use the <Next> command to proceed with the installation.
- Choose Destination Folder is the next selection that needs to be made. This is the folder in which the application will reside. The default directory is C:\Program Files\Doble\M4000. Note the Leakage Reactance software must be installed in the same directory as the M4000 PC software. Once a directory is identified, select <Next>.



- The last screen will indicate that the software has been successfully installed. Select <OK> to exit the installation program.

Features and Enhancements

- New platform; the program is a true Window 32-bit application
- Multiple tests stored on one form
- Both Per Phase and Three Phase Equivalent test stored in same data set
- More intuitive nameplate data entry

- Language Support
 - English
 - French
 - Portuguese
 - Spanish

Known Limitations

Please submit all bug reports to your Doble principle engineer or local Doble representative.