

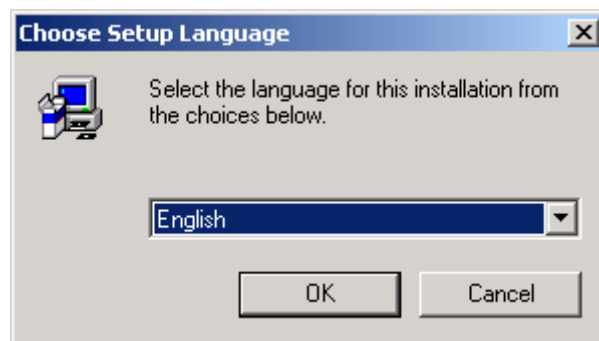
## M4000 Software Version 3.4 Web Installation

### 1. Introduction

- In order to use this software application, the PC's operating system must be Windows 98 or newer, and Microsoft Internet Explorer V5.0 or more recent must be installed.
- The application has been tested on the following operating systems: Windows' 98, NT 4.0, 2000 and XP.
- If installing on an M4200C controller, confirm that the default printer driver is M4200 Thermal. To do this, open the Start menu and select Control Panel. In the window that appears select Printers and Other Hardware. In the Printers and Other Hardware window open View installed printers and fax printers. In the list of printer drivers that appear the M4200 Thermal printer driver should have a black circle with a checkmark in it. If it does not, highlight the M4200 Thermal printer icon, open File on the menu and select Set as Default Printer. If the M4200 Thermal printer is not listed please contact you Doble principal engineer or local representative.

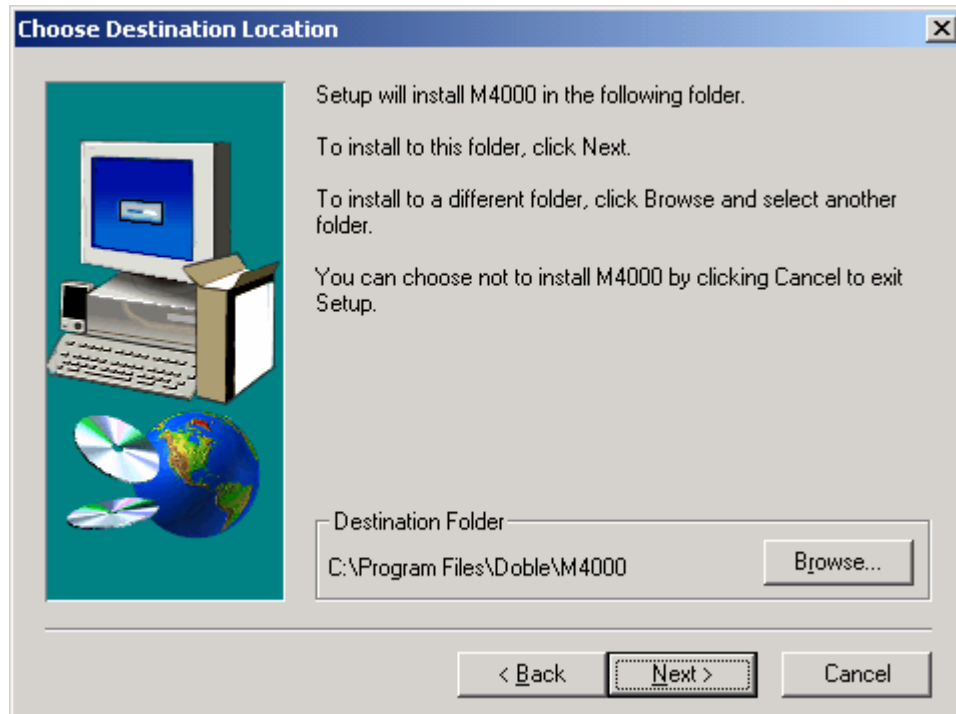
### 3. Installing the software:

- Extract the installation program from the executable file by double clicking on the self-extract file M4KV34, a window will appear requesting the directory in which to place the files. Note the default directory is C:\Doble\Temp\M4K.
- To run the installation program select, the Run... option on the Start menu. In the window that appears, type in the directory path where the installation program resides with \setup appended to it; for example <C:\DOBLE\TEMP\M4K\disk1\setup>.
- The next window that appears will request the user to specify the language in which to perform the installation. The user will be asked to specify a number of settings, and the questions will be presented in the language specified here. The user will be asked a second time later in the installation process to specify language pertaining to the languages that will be available interchangeably for the user interface.

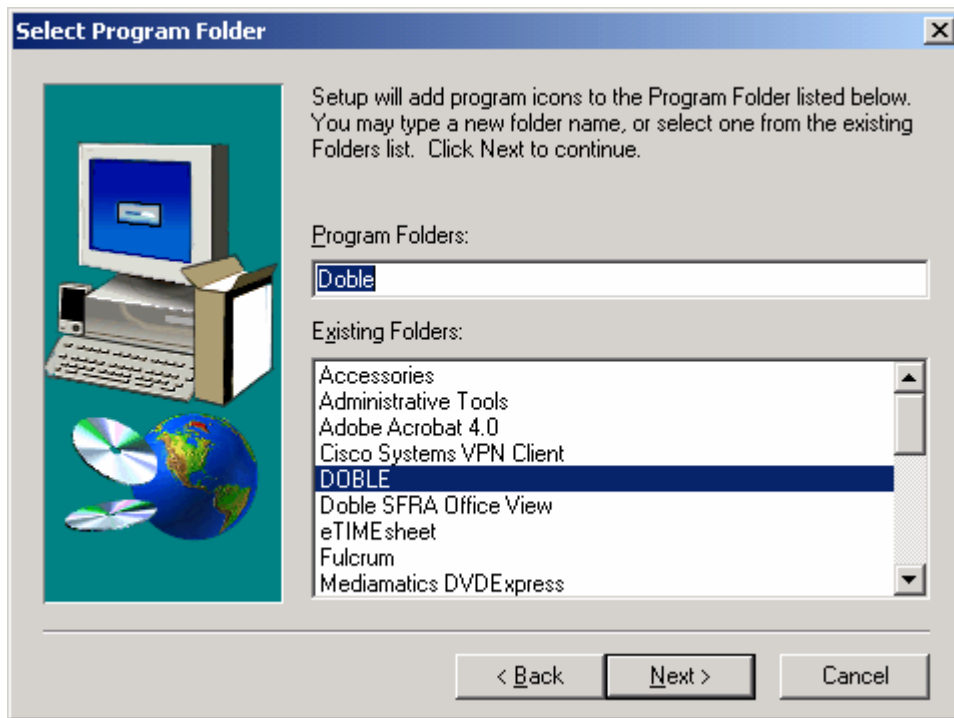


- The Welcome screen will appear next. Read the advisory and if suitable select <Next>.
- The user will be asked to acknowledge the software license agreement. If acceptable, choose <Yes>.

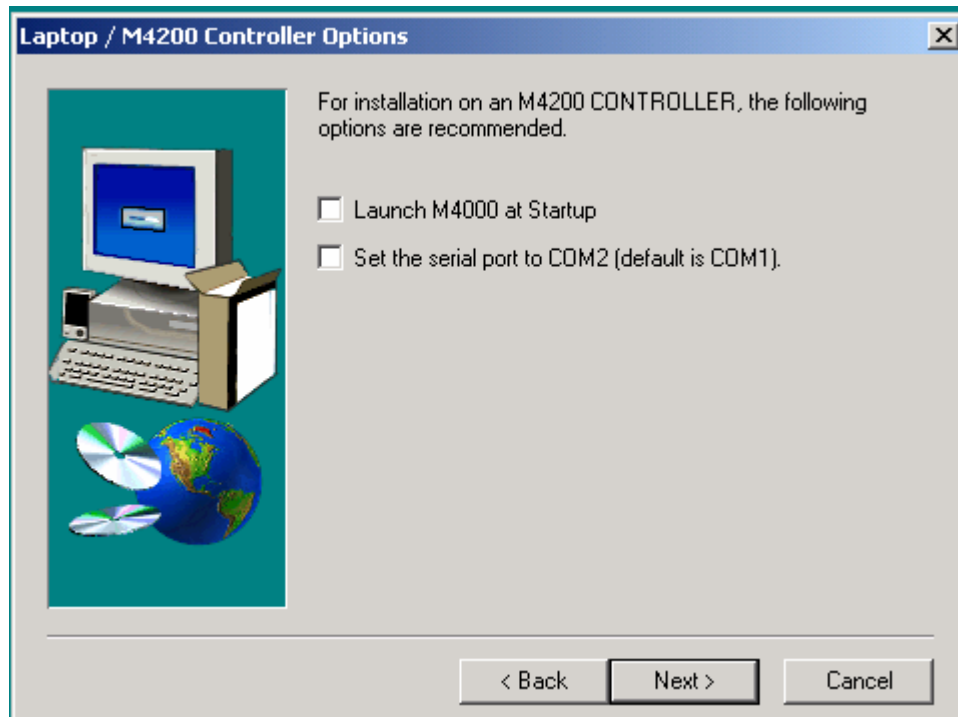
- Choose Destination Folder is the next selection that needs to be made. This is the folder in which the application will reside. Note Doble has changed the default directory to C:\Program Files\Doble\M4000. This was done to follow standard Windows protocol. Once a directory is identified, select <Next>.



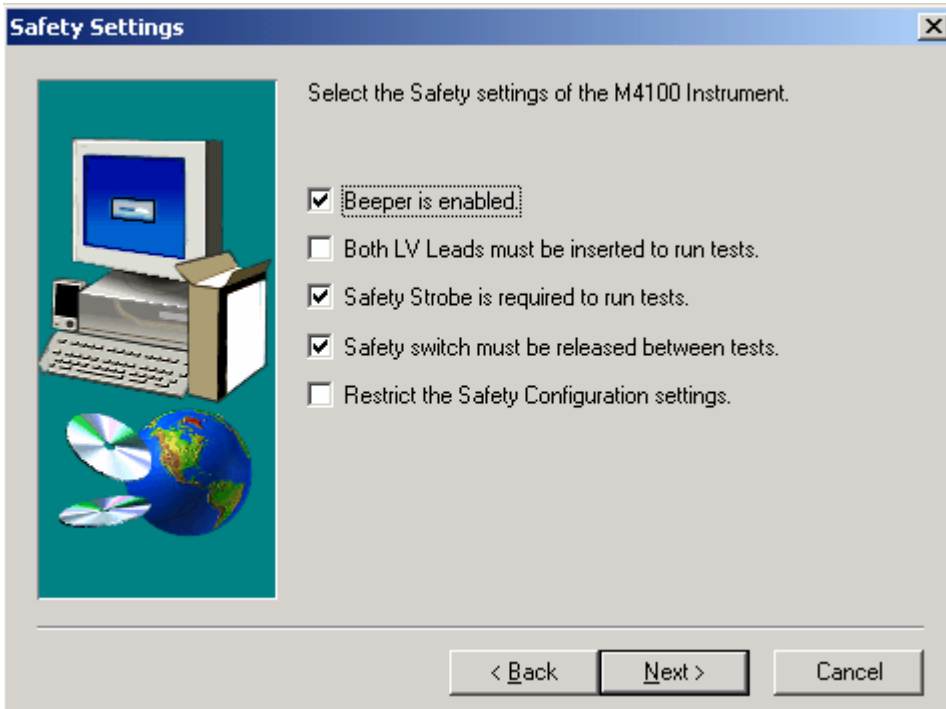
- The installation will ask to what Program Folder a program icon should be added. The default is Doble, which is the same as the current version. Note the icons will distinguish the two applications. Choose a Program Folder and select <Next>.



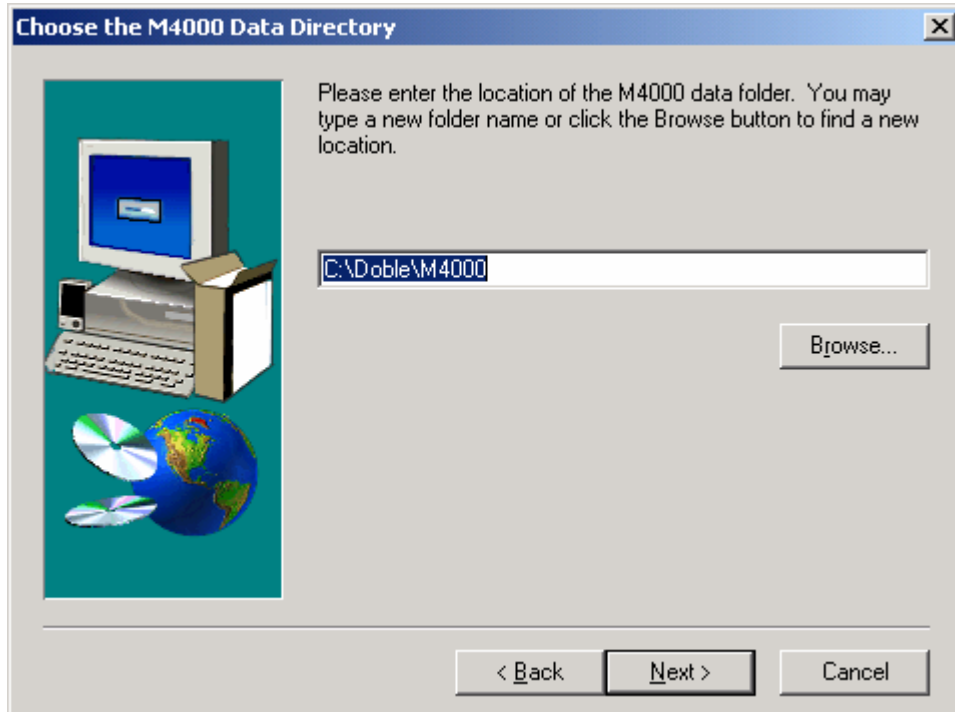
- The next screen will configure the PC/M4200 Controller as it relates to operating the M4100.
  - The first option, if selected, will automatically start the M4000 application each time the PC/M4200 Controller is turned on. Make sure to remove the existing M4000 Software from Startup.
  - The second choice sets the serial port used to communicate with the M4100; the default is COM1. Selecting this option will change the communication from COM1 to COM2. If installing on an M4200 Controller the communication port needs to be COM2. Other ports can be selected from within the application by selecting the Instrument tab located under the Tools/Configure menu option.
  - Choose the desired options and proceed to the Safety Settings by selecting <Next>



- These options will establish the manner in which the M4100 operates.
  - Restrict changing the Safety Configuration. The Doble.ini is no longer used to save these settings; instead they will be stored as Registry entries. These safety configurations can be modified through the application. If limiting access to these setting is desired, this option should be selected. The configuration consist of:
    - Beeper is enabled (default on, prior to applying voltage)
    - Both low voltage leads have to be plugged in (default not required)
    - Requiring the safety strobe be plugged in (default is required)
    - Release safety switch between tests (default is required)
  - If these settings are not restricted, they can be found in the Instrument tab under the Tools/Configuration menu option.
  - Proceed to the Auto-fill Company Name screen by selecting <Next>.



- If users desire to have a name automatically appear in the Company Field on the test form when a new form is created, that information should be entered at this time. Note that a value in this field is optional. Proceed to the next screen by selecting <Next>
- Next users will be asked to specify the language that will be used to run the application. Note that more than one language can be selected. Once satisfied, proceed by choosing <Next>.
- The next screen will set the default directory to store test results from tests run with the M4000 Clipboard. Make a selection followed by <Next>.



- The last screen will summarize the configuration options. If acceptable, select <Next> and the application will complete the installation; otherwise choose <Back > to make modifications. At this point the application will begin the installation.

#### **4. Multiple Version of M4000**

- If desired, multiple versions can be run from the same PC/M4200 Controller. To prevent the downloading of firmware each time the version of software used to run the M4100 instrument changes, perform the following steps.
- Locate the M4i.x0, BootBlok.x0 and Loader.x0 in the directory in which version 3.4 is installed (the default directory is C:\Program Files\Doble\M4000)
- Copy these three files into the directories of the other versions of the M4000 Software.

#### **5. Reporting Problems**

- Please submit all bug reports to your Doble principal engineer or local Doble representative.