



DOBLE PROTECTION TESTING

RTS

RELAY TESTING SOFTWARE



UNIVERSAL MAINTENANCE PROCEDURE AND TEST DATA MANAGEMENT SYSTEM



STANDARDIZED PROCESS MANAGEMENT FOR AUTOMATED PROTECTION TESTING AND UNIVERSAL ASSET MAINTENANCE

Doble RTS™ is relay testing software and much more. With a relational database backend and modules for creating virtually limitless test and inspection routines, plus the industry's only multi-vendor set of relay test set drivers, RTS is a toolkit for the requirements of P&C and substation technicians that also meets the information management needs of program supervisors.

Develop custom procedures that not only match your test standards but also enhance your workflow. Adapt the included database of over 600 model-specific relay test routines to your requirements using tools like FasTest™ for test creation, RTS FasFault™ for line modeling, and the PRC Data Control™ for universal forms and field records management. RTS also offers an interface for IEC 61850-compliant testing with Doble F8200/F8300 Power System Simulators.

Use RTS stand-alone or link to Doble PowerBase™ to further streamline processes between the office and the field. In either scenario, stakeholders work from standardized records for optimal asset performance tracking and completion of requirements under PRC-005 or other NERC compliance standards.

FEATURES AND BENEFITS

- Drivers that support Doble, Manta, Megger, Omicron and SMC relay tests sets.
- Unique Library-System test routine linking that standardizes procedures and enables powerful one-to-many records management and reporting functions.
- Over 600 industry-proven Library routines included.
- Settings importers auto-calculated fault values based on applied settings.
- Custom forms interface for universal field data collection.
- Line and line fault modeling, COMTRADE and *.SS1 import and playback, state sequencing and editing, time-compensated end-to-end testing that supports mis-matched test sets.
- IEC 61850-compliant testing with Doble F8-series Power System Simulators.



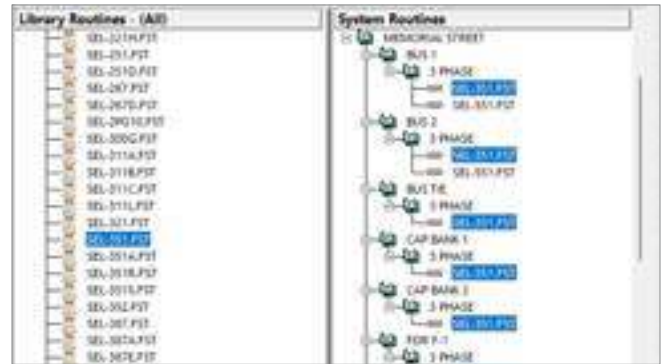
DOBLE PROTECTION TESTING RTS

Relay Testing Software



STANDARDIZED TESTING

Library routines (maintenance procedures) and System routines (individual device data) merge at runtime but are managed separately within the RTS database for a superior approach to process and records consistency that enables powerful automation throughout the application.



Build a Library routine (approved set of procedures required for a specific model or type of system component) then link it to System routines (data and records unique to individual instances of those components) for standardized testing.

PRE-BUILT TEST ROUTINES

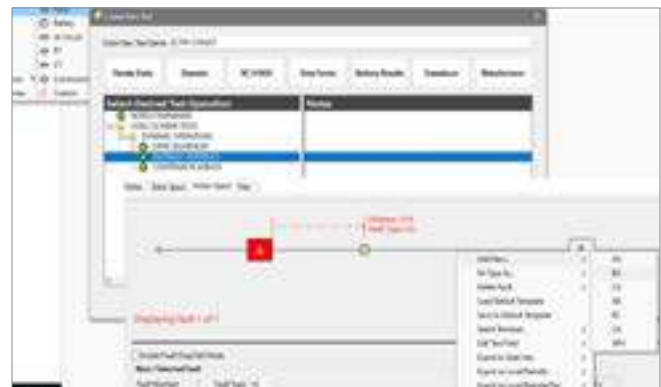
RTS includes a database of automated Library routines that contain element tests specific to hundreds of popular relay models. Doble developed these routines to showcase RTS automation and give customers a tremendous headstart in their transition to the RTS environment.



The Library routines from Doble are proven, quality procedures that are easy to adapt for specific testing and workflow requirements.

EFFICIENT TEST CREATION

Use the FasTest module to efficiently create steady-state, dynamic, IEC 61850, and universal forms-based P&C and substation device test procedures. Apply BASIC scripting for specific, custom operations in any test operation.



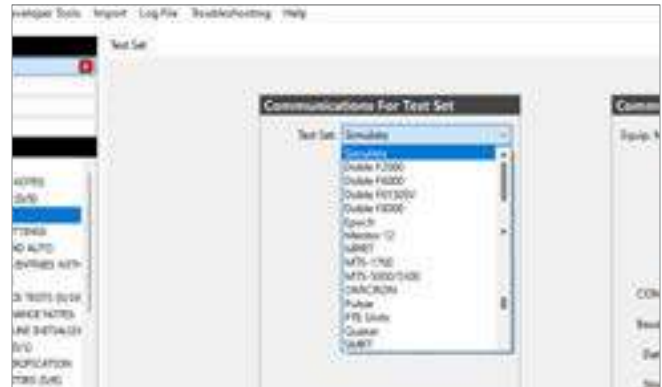
Apply state sequencing, line modeling, and COMTRADE playback for complete end-to-end system tests, even if using mismatched test sets.



RTS

A rugged laptop with a black, protective casing is shown. The screen displays a web browser with the address bar showing 'http://www.btg.com'. The main content area of the browser shows a webpage titled 'Info BTG' with a blue and white logo on the left and a photograph of an industrial facility with tall chimneys on the right. The laptop is open, and the keyboard is visible below the screen.

- Drives Doble, Manta, Megger, Omicron, and SMC relay test sets.
- Consistency whether using one make or a mix of different relay test equipment.



TEST AUTOMATION

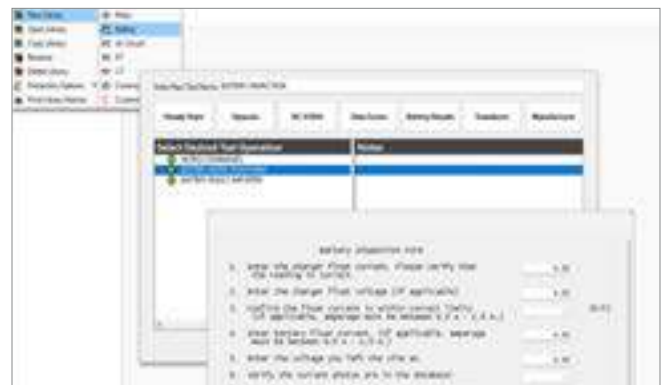
- Import and parsing tools auto-populate settings.
- Repeatable, formula-driven tests.
- Settings interpreter auto-calculates test values relay-to-relay.



FIELD DATA MANAGEMENT

Use the PRC Data Control interface to seamlessly expand routines to collect evidence required by NERC:

1. Create custom smart forms.
2. Preserve the use of existing test forms.
3. Import results from any external test system.



DOBLE PROTECTION TESTING

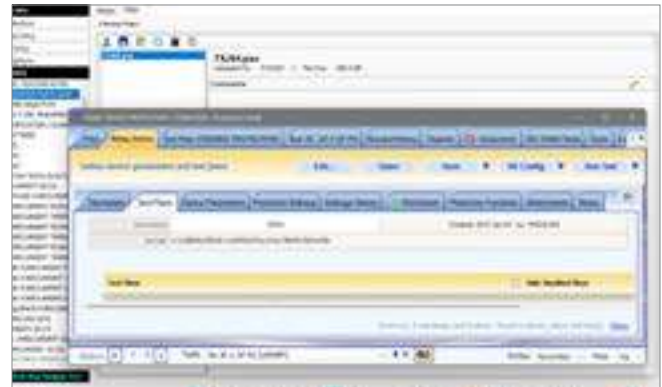
RTS

Relay Testing Software



FILE AND DOCUMENTATION MANAGEMENT

- Attachment locations within Library and System routines.
- Procedures reference attachments and launch them via their native software.
- Supports file comparisons and attaching files to results.



Supplement routines by attaching photographs, drawings, product documentation or other files of any type which can launch in their native software for external operations.

CONSOLIDATED RECORDS

- Merge Utility for database-to-database transfers of routines, results, macros, curve data and translation tables.
- Results Manager for filtering and sorting records in the database to easily generate single and batch reports.



The RTS database enables information management that supports many reporting and merging functions across the records of individual users or entire teams.

DATA INTEGRITY

- Bulk editing functions and numerous database management tools.
- Populate and manage from Doble PowerBase™ for a seamless office-to-field roundtrip process.



RTS provides options that allow users and administrators to configure system parameters around their preferences and requirements including transactions with PowerBase.



RTS

RELAY TESTING SOFTWARE

- One software for protection testing and universal maintenance applications.
- Streamlined testing processes and system-wide standardization.
- Flexible and limitless test configurability and customization.
- Powerful data control, bulk editing, mass user updating and consolidated reporting.
- Efficient management of standard operating procedures.
- Secure knowledge capture and effective information sharing.
- Seamless integration with Doble PowerBase™.
- Ideal solution for NERC compliance testing and evidence collection.



Learn more about RTS [here](#). To request a demo, speak with your Doble representative.



Doble Engineering
Worldwide Headquarters
123 Felton Street, Marlborough, MA 01752
USA tel +1 617 926 4900 | fax +1 617 926 0528
www.doble.com

Specifications are subject to change without notice.
Doble is an ISO 9001 & ISO/IEC 17025 & 17034 Certified Company.
Doble is an ESCO Technologies Company.
PUBLISHED: JULY, 2025