

Connecting a Vanguard Unit via Bluetooth

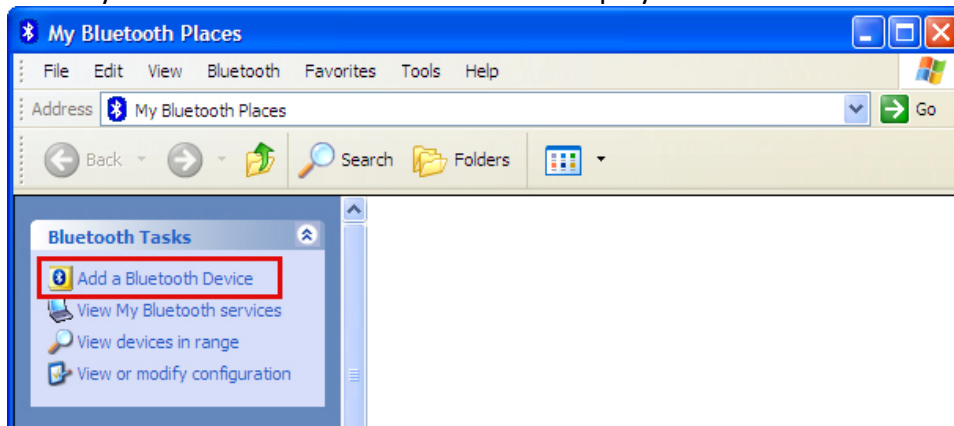
Some Vanguard test equipment offer the ability to connect to a PC wirelessly via Bluetooth. Please use the instructions below to pair the Vanguard unit to a PC via Bluetooth. A Vanguard TRM is used in the example below:

For Windows XP:

- a. Make sure the unit is turned on. Then double click on the Bluetooth system tray icon (on the bottom right corner of your computer screen):

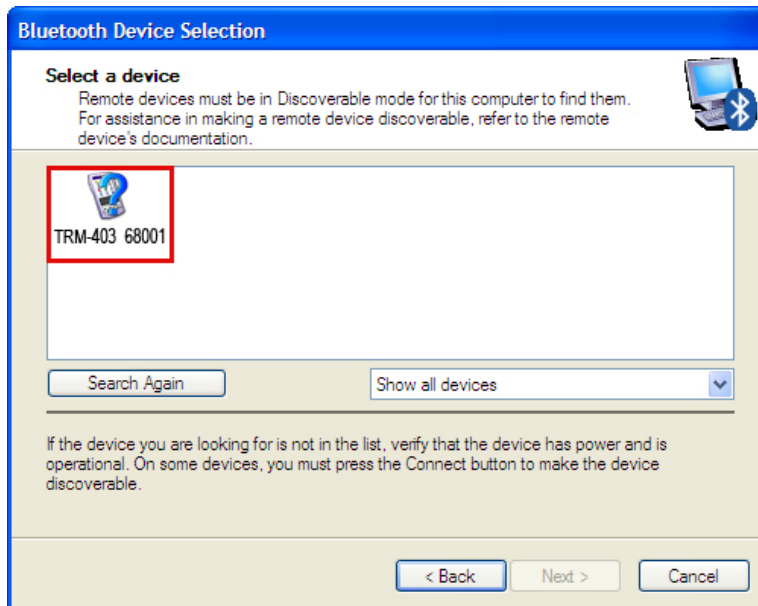


- b. The “My Bluetooth Places” window will be displayed:



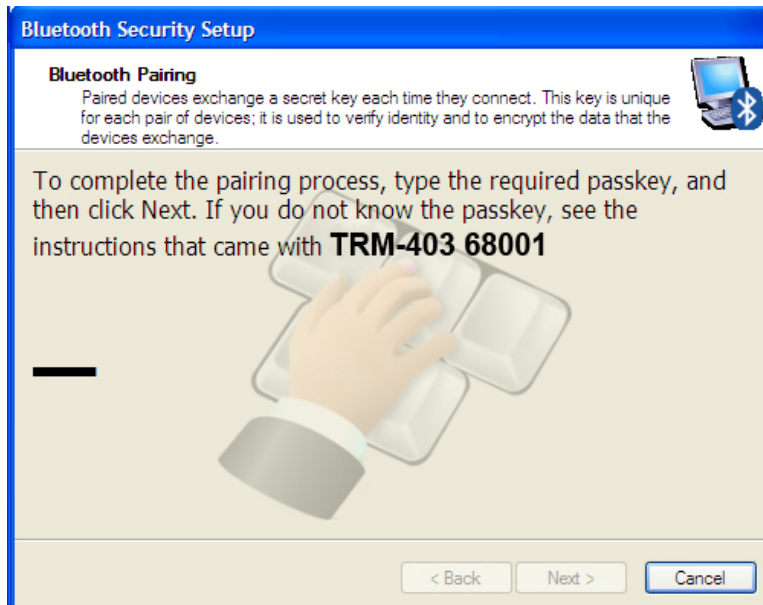
Click on “Add a Bluetooth Device” on the left window pane.

- c. The Bluetooth Setup Wizard window will be displayed. Click on the “Next” button. The PC will scan for nearby devices and list all available Bluetooth devices:



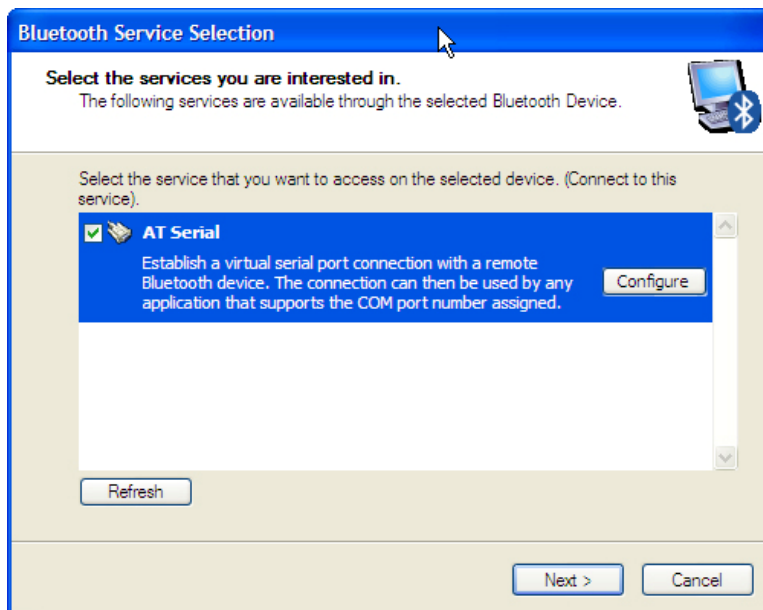
The will will be listed as “UNIT S/N” where UNIT is the name of the unit (TRM-403 in this case) and S/N is the device’s serial number. Click on the icon for the unit and then click on the “Next” button.

- d. The following window will be displayed asking for a secret key to connect to the unit:



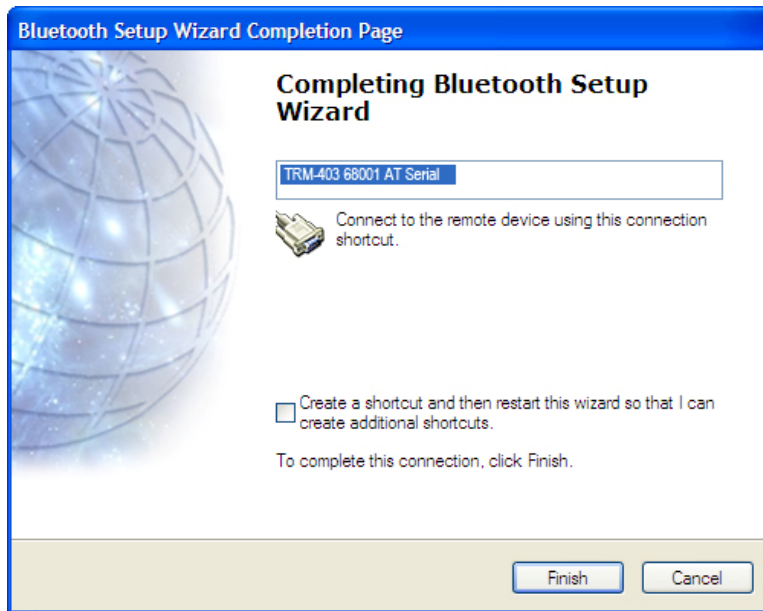
Type the word “default” (without the quotes and in all lower-case) and then click on the “Next” button.

- e. The following window will be displayed with the option to connect to the unit as a serial port:



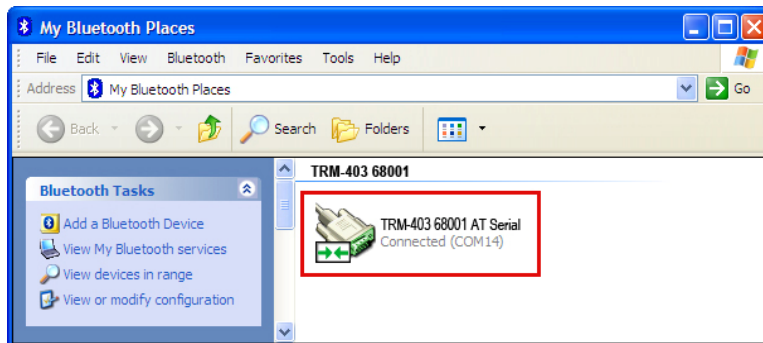
Make sure to check the box next to “AT Serial” and then click on the “Next” button.

- f. The following confirmation screen will be displayed:



Click on the “Finish” button.

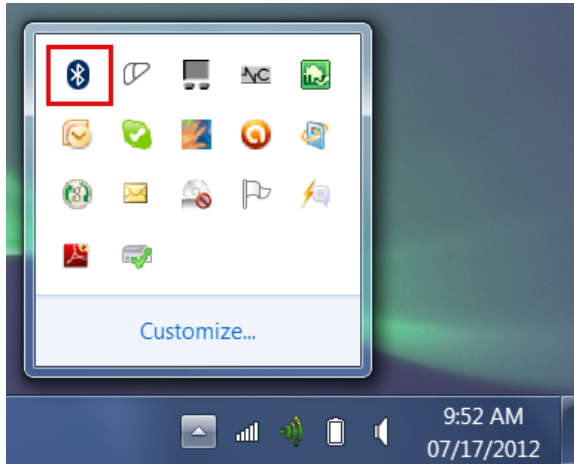
- g. The unit name (TRM-403 in this case) will now be displayed in the “My Bluetooth Places” window:



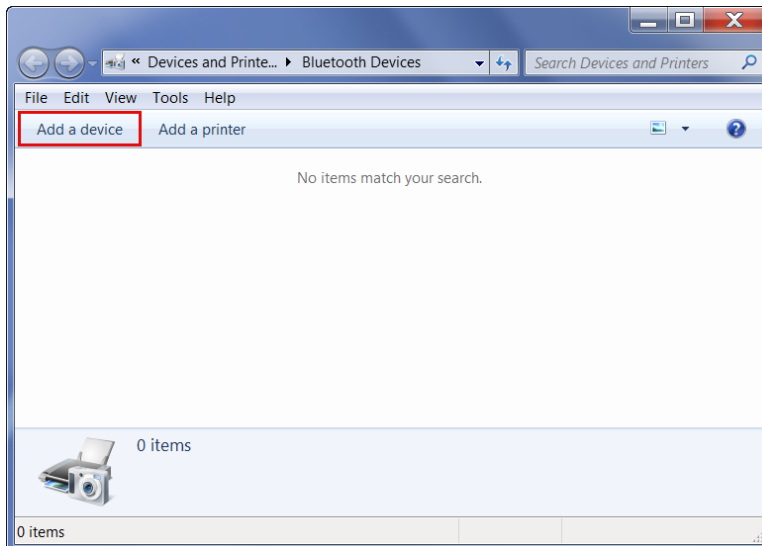
Note the port number listed under the device name. In the above case, the port number is COM14. Use this port number in the product's software to connect to the unit.

For Windows 7:

- a. Make sure the unit is turned on. Then double click on the Bluetooth system tray icon (on the bottom right corner of your computer screen):

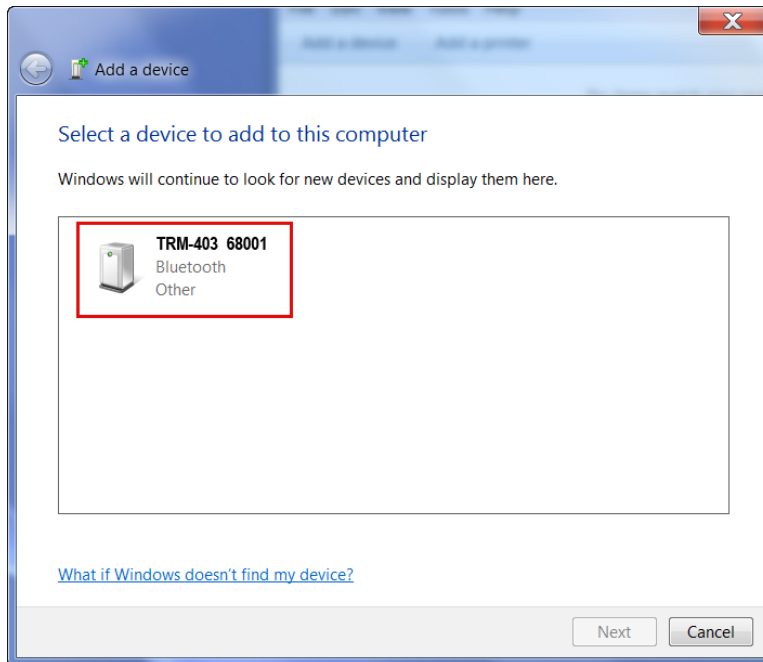


- b. The “Bluetooth Devices” window will be displayed:



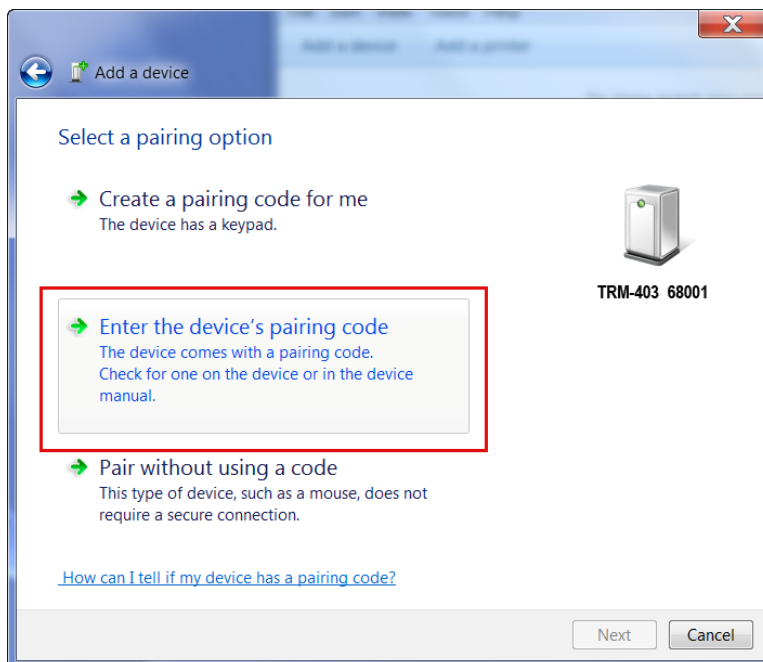
Click on “Add a device”.

- c. All nearby Bluetooth devices will be listed:



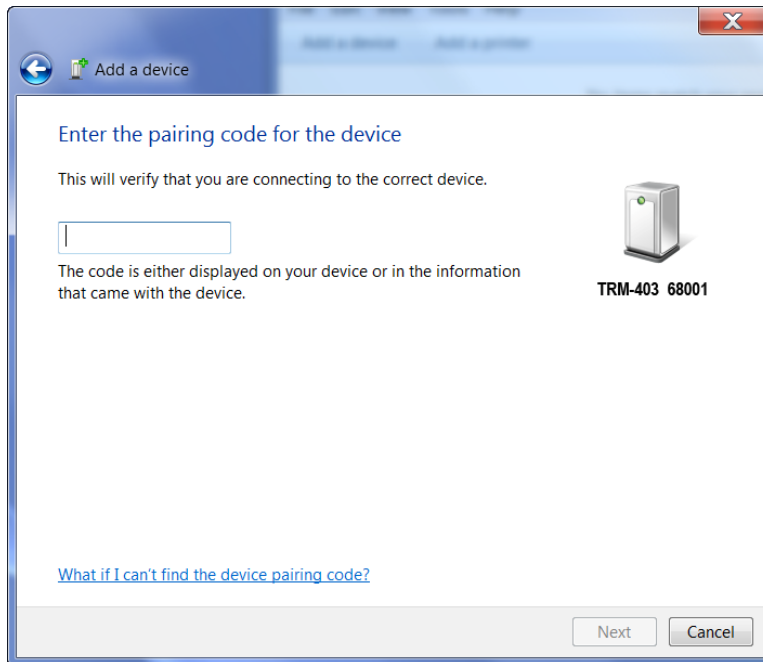
The unit will be listed as “UNIT S/N” where UNIT is the name of the device (TRM-403 in this example) and S/N is the device’s serial number. Click on the icon for the unit and then click on the “Next” button.

- d. The device pairing screen will be displayed:



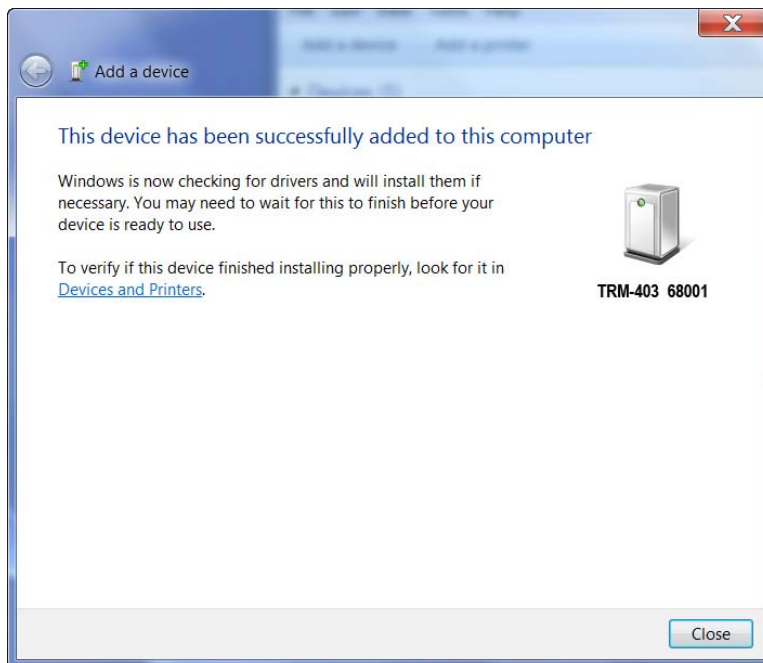
Click on “Enter the device’s pairing code” option.

- e. The following window will be displayed:



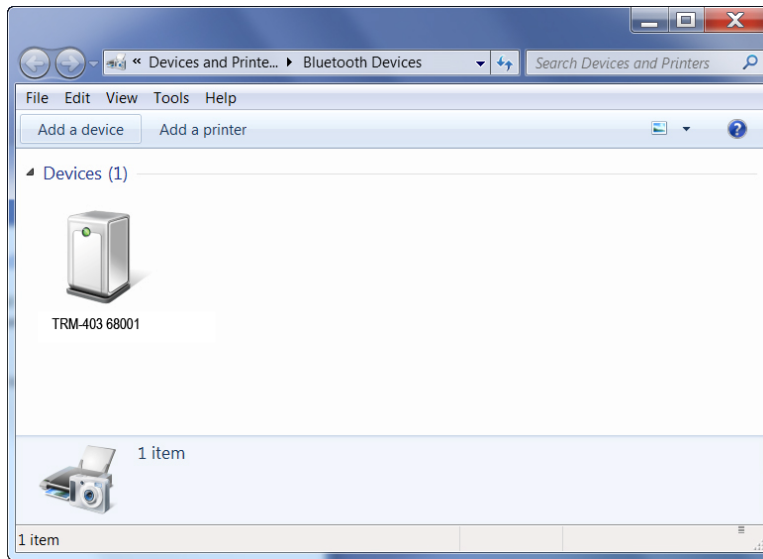
Type the word “default” (without the quotes and in all lower-case) in the text box and click on the “Next” button.

- f. The following screen will be displayed:



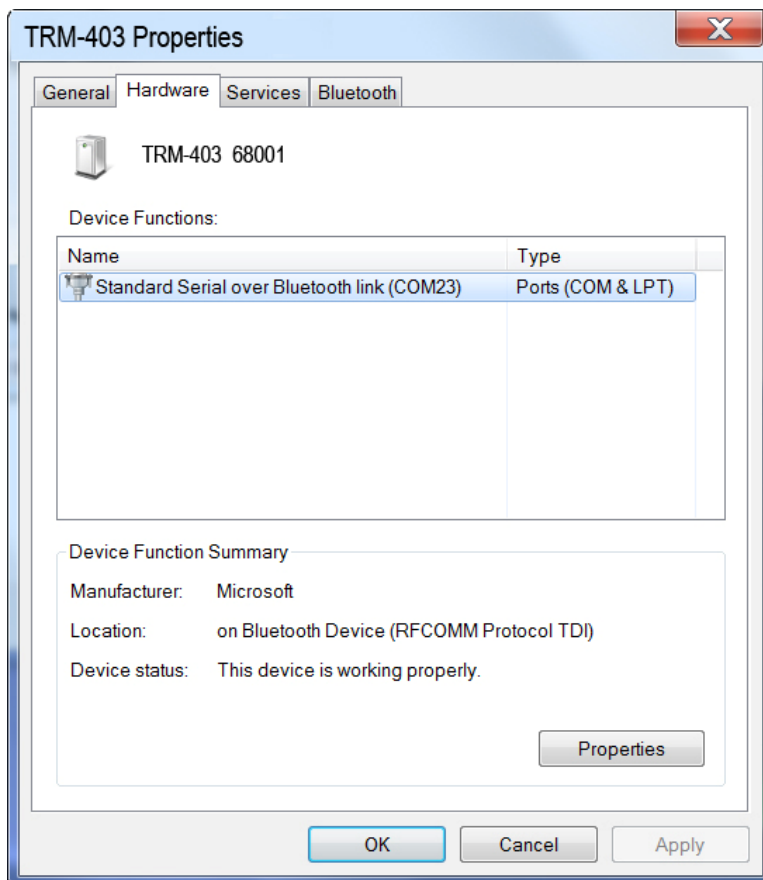
Click on the “Close” button.

- g. The unit (TRM-403 in this case) will now be listed under “Bluetooth Devices”:



Right click on the device's icon and select “Properties” from the pop-up menu.

- h. The properties window will be displayed. Click on the “Hardware” tab:



Note the port number listed after the device name (COM23 in the above example). Use this port number in the product's software to connect to the unit.